



BOONE COUNTY, MISSOURI

**Request for Bid #: 30-19MAY16 – Office Furniture for the Emergency
Communication Center**

ADDENDUM #1 - Issued May 11, 2016

This addendum is issued in accordance with the Request for Bid Response Page in the Request for Bid and is hereby incorporated into and made a part of the Request for Bid documents. Bidders are reminded that receipt of this addendum should be acknowledged and submitted with Bidder's Response Form.

Specifications for the above noted Request for Bid and the work covered thereby are herein modified as follows, and except as set forth herein, otherwise remain unchanged and in full force and effect.


1. REPLACE the Response Form with the attached Revised Response Form.
2. REPLACE furniture specifications in the bid (pages 23-60) with the attached pages. The changes include the following:

Room 107 was listed in grouping D2-a when it should have been D2-b

Building Maintenance room 152 was omitted.

The quantity of nesting chairs should be 76.

By:


Melinda Bobbitt, CPPO, CPPB
Director of Purchasing

BIDDER has examined **Addendum #1** to Request for Bid #30-19MAY16 – *Office Furniture for the Emergency Communication Center*, receipt of which is hereby acknowledged:

Company Name: _____

Address: _____

Phone Number: _____ Fax Number: _____

E-mail: _____

Authorized Representative Signature: _____ Date: _____

Authorized Representative Printed Name: _____

Revised RESPONSE FORM

Company Information:

Name: _____

Address: _____

Phone Number: _____ Fax Number: _____

Email: _____ Federal Tax ID: _____

- Corporation
- Partnership Name: _____
- Individual/Proprietorship Name: _____
- Other: _____

The undersigned offers to furnish, deliver and install the articles or services as specified at the prices and terms stated and in strict accordance with the specifications, instructions and general conditions of bidding which have been read and understood, and all of which are made part of this order.

Authorized Representative (Print Name): _____

Signature

Date

Materials, Installation, and Labor Costs: All materials provided by Contractor shall be new materials of high quality that shall give long life and reliable operation.

Complete the following page: Manufacturer, Series, Unit Price and Extended Price.

Summary Code	Product	Manufacturer	Series	Unit Price	Qty	Extended Price
D1	Directors Casegoods				2	
D2-a	Private Office Casegoods				8	
D2-b	Private Office Casegoods				4	
D3-a	Shared Office				1	
D3-b	Shared Office				1	
D3-c	Shared Office				1	
D4	Conference Room				3	
D6	Building Maintenance Casegoods 152				1	
C1	Guest Chair				43	
C2	XL Guest Chair				1	
C3	Side Chair				1	
C4	Nesting Chair				76	
C5	Task Chair				28	
C6	Wood Chair				12	
C7	Stack Chair				12	
C8	Conference Chair				35	
T1-a	Round table				3	
T1-b	Training table with Fixed Leg				14	
T2	Computer Training				8	
T3	Training table with Flip top				4	
T4	Height Adjustable table				1	
T5	Conference Table				3	
T6	Wood meeting table				2	
T7	Night Stand				4	
T8	End Table				2	
T9	Magazine Table				1	
T10	Instructor's Desk				1	
E1	Dual Monitor Arms				26	
E2	Keyboard Tray				26	
E3	CPU Holder				42	
E4	Surface Mounted Power				26	
E5	LED Task Light				26	
F1	Lateral file 4H 36" wide				4	
F2	Lateral File 4H 30" wide				4	
O1	Bunk Beds				12	
O2	Mattresses				12	
O3	Night Stand Shelf				6	
	Subtotal					
	Installation					
	Grand Total					

Percent discount from list should other item(s) be identified after contract award that need to be added to scope of work: _____%.

Work will begin on project _____ days after the receipt of the Notice to Proceed.

Work will be completed _____ days after receipt of the Notice to Proceed.

List any deviations from bid specifications:

Boone County 911 Center

Furniture Bid Specs

Boone County 911 Center Typicals – Directors Office

Manufacturer: OFS

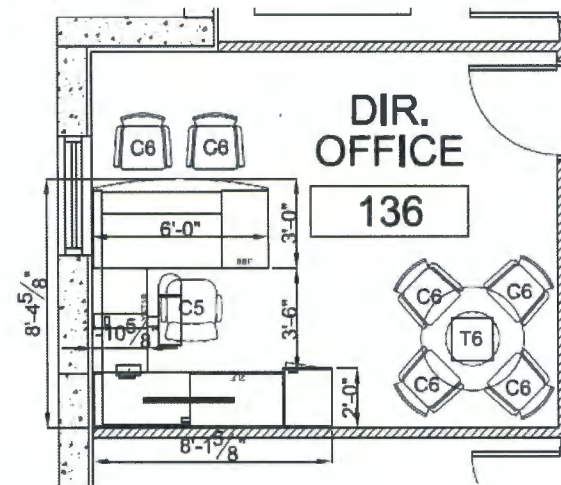
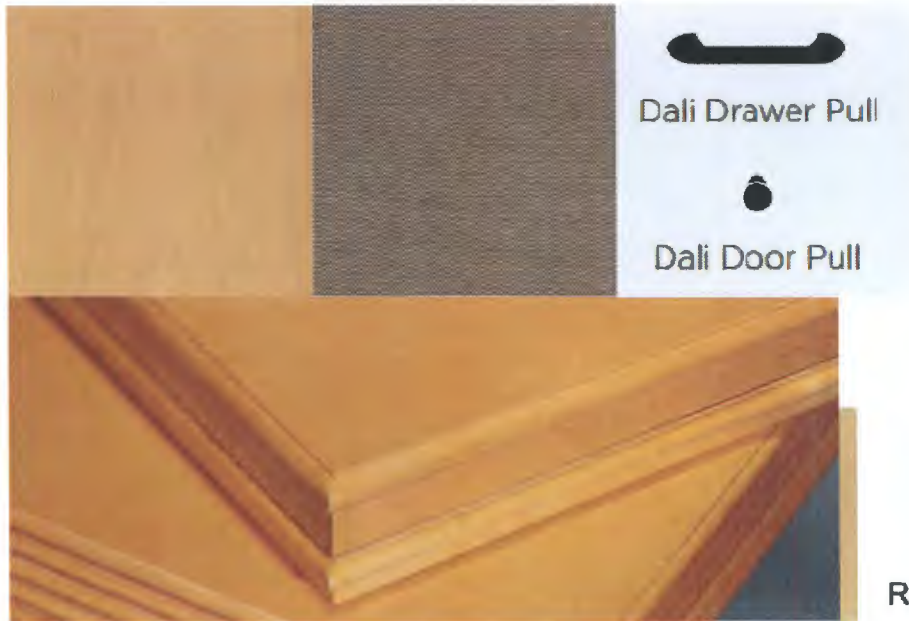
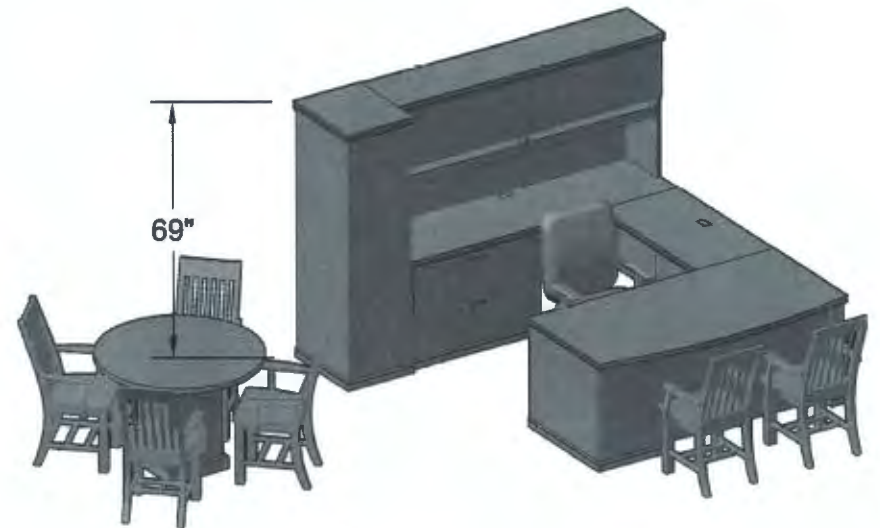
Finishes: Wood - Honey Maple

Edge Profile - Corona

Tackboard Fabric - Momentum Vox Mystic

Accessories Package: ECA Power, Keyboard Tray,
CPU Holder, Dual Monitor Arm, LED Task Light

Code: D1



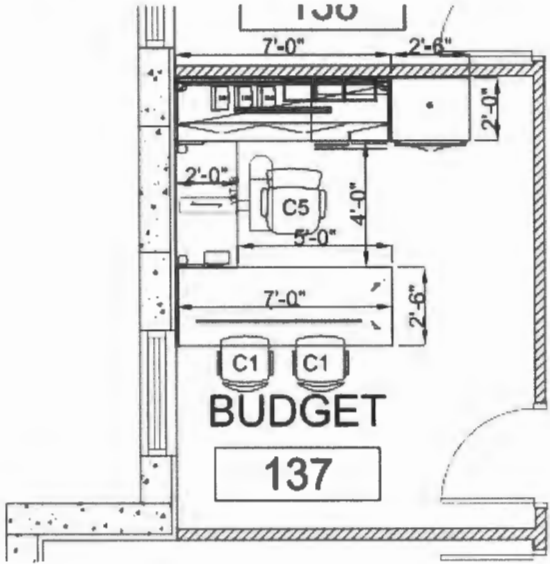
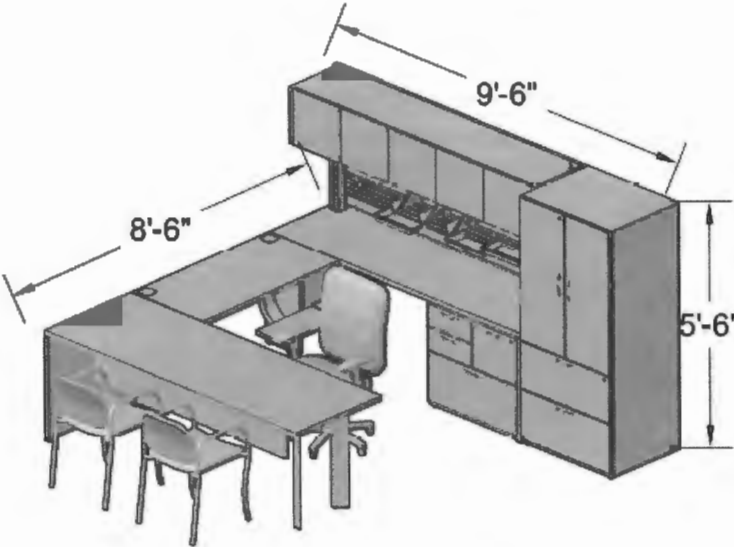
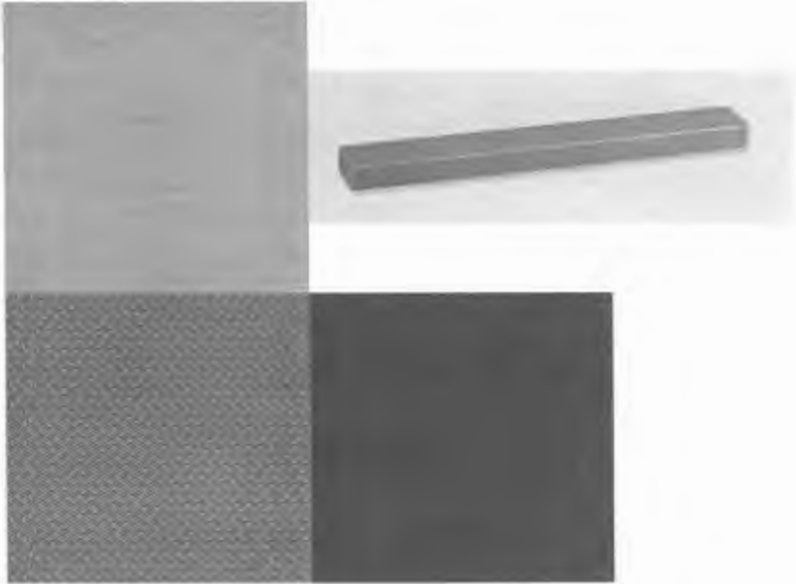
Rms 109 & 136

**Boone County 911 Center
Typicals – Private Office**

Manufacturer: Teknion
Finishes: Laminate - Stainless
 Metal - Granite
 Edge - Stainless
 Pull Style/Finish - Rectilinear/Granite
 Tackboard Fabric - Teknion Wales Newport

Accessories Package: ECA Power, Keyboard Tray, CPU Holder, Dual Monitor Arm, LED Task Light, 3 Paper Trays, 3 Division Sorters

Code: D2-a



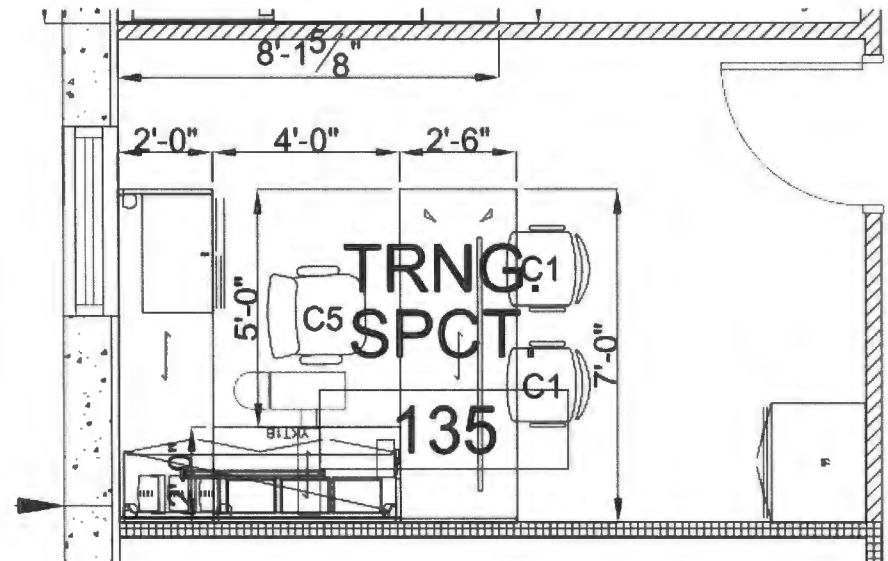
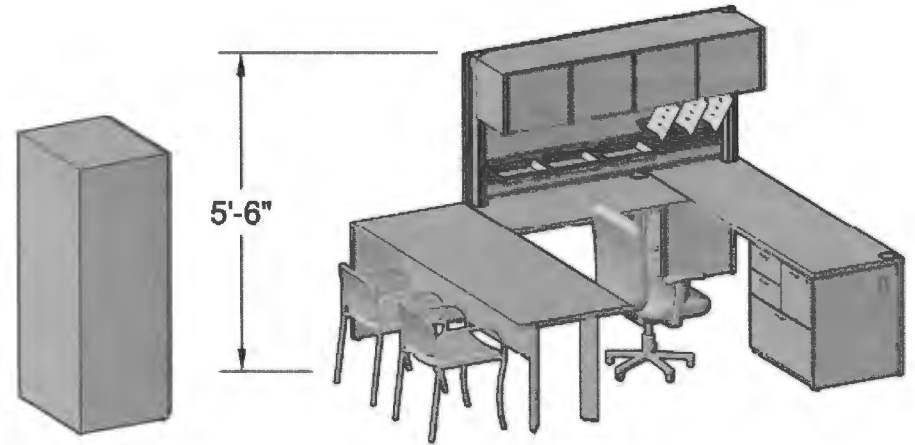
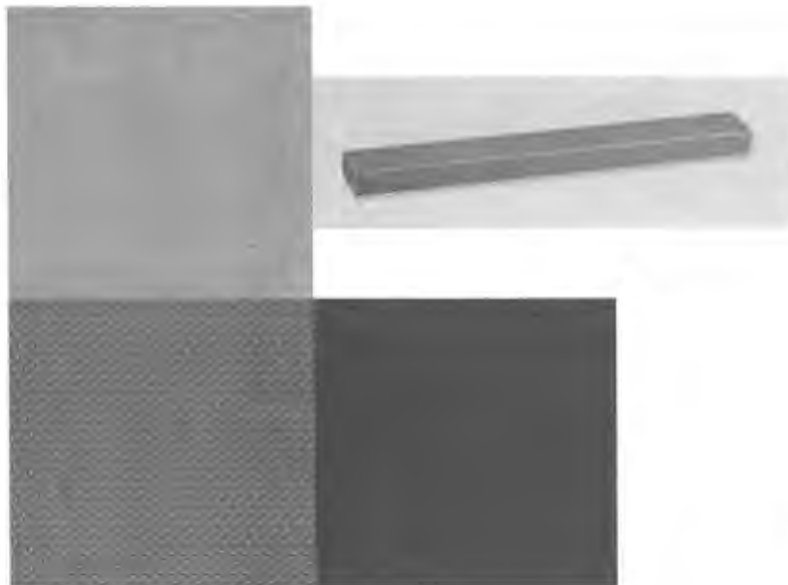
Rms 108,111,137,138,139,141,142,143

Boone County 911 Center Typicals – Private Office

Manufacturer: Teknion
Finishes: Laminate - Stainless
 Metal - Granite
 Edge - Stainless
 Pull Style/Finish - Rectilinear/Granite
 Tackboard Fabric - Teknion Wales Newport

Accessories Package: ECA Power, Keyboard Tray,
 CPU Holder, Dual Monitor Arm, LED Task Light,
 3 Paper Trays, 3 Division Sorters

Code: D2-b



Rms 107, 110,112,135

Boone County 911 Center Typicals – Shared Office

Manufacturer: Teknion

Finishes: Laminate - Stainless

Metal - Granite

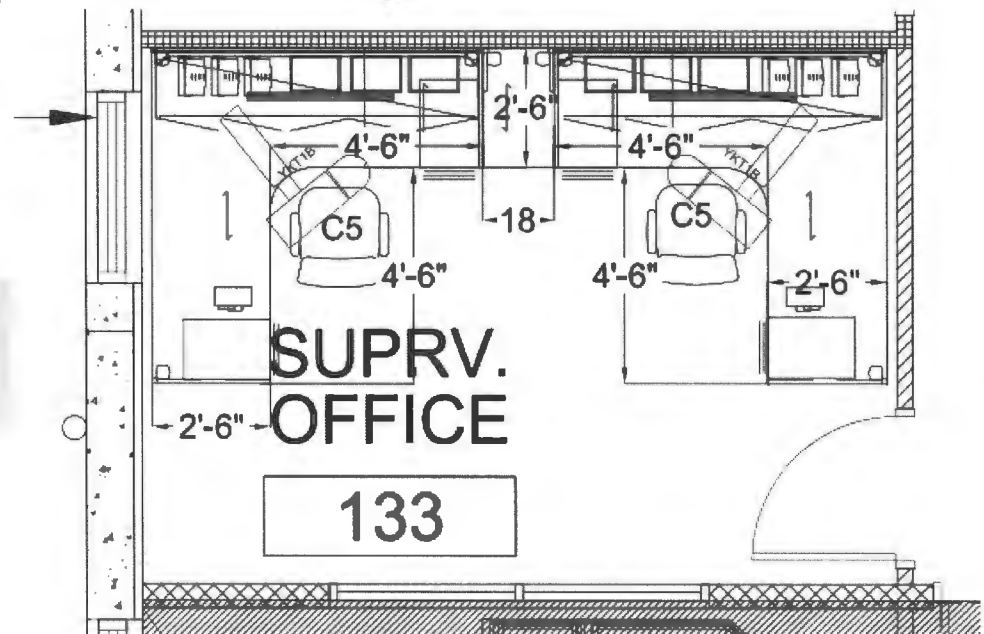
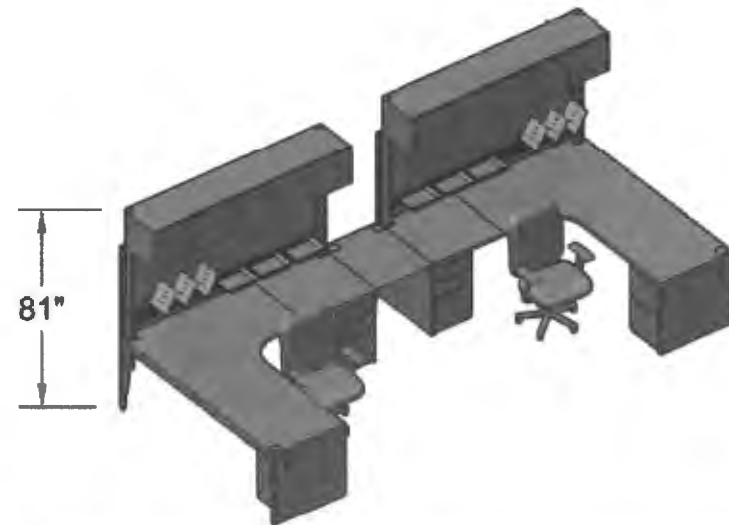
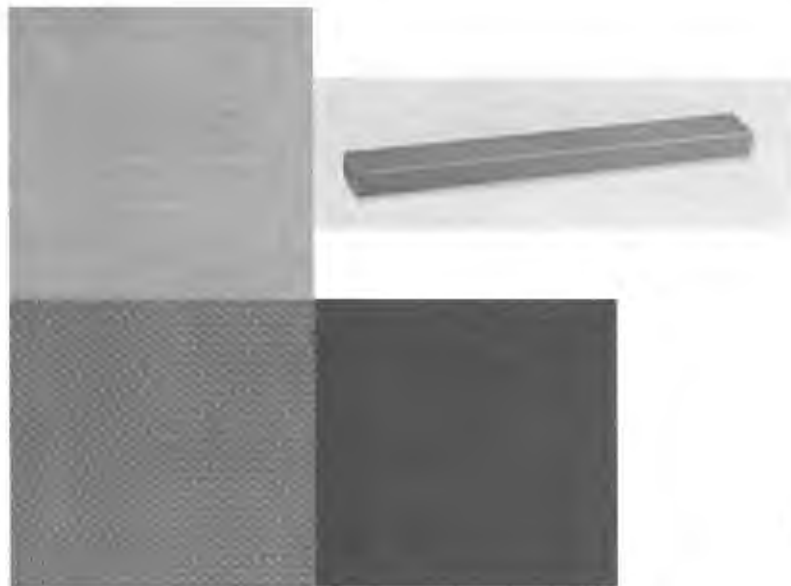
Edge - Stainless

Pull Style/Finish - Rectilinear/Granite

Tackboard Fabric - Teknion Wales Newport

Accessories Package: ECA Power, Keyboard Tray, CPU Holder, Dual Monitor Arm, LED Task Light, 3 Paper Trays, 3 Division Sorters

Code: D3-a



Rm 133

Boone County 911 Center Typicals – Shared Office

Manufacturer: Teknion

Finishes: Laminate - Stainless

Metal - Granite

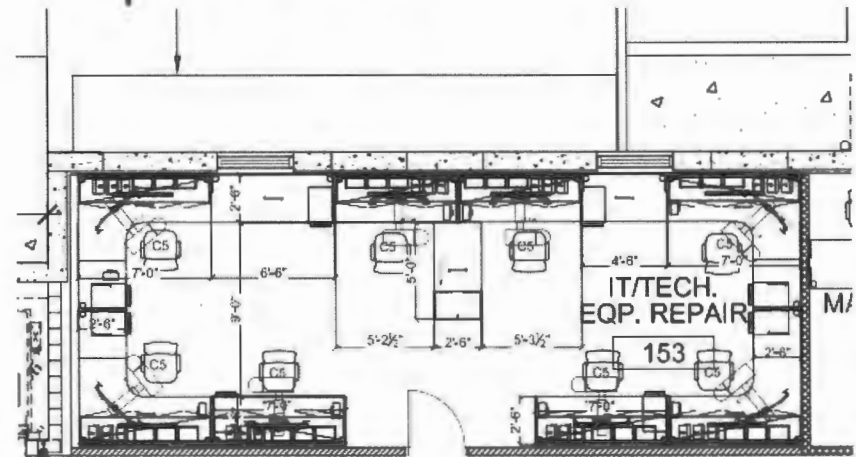
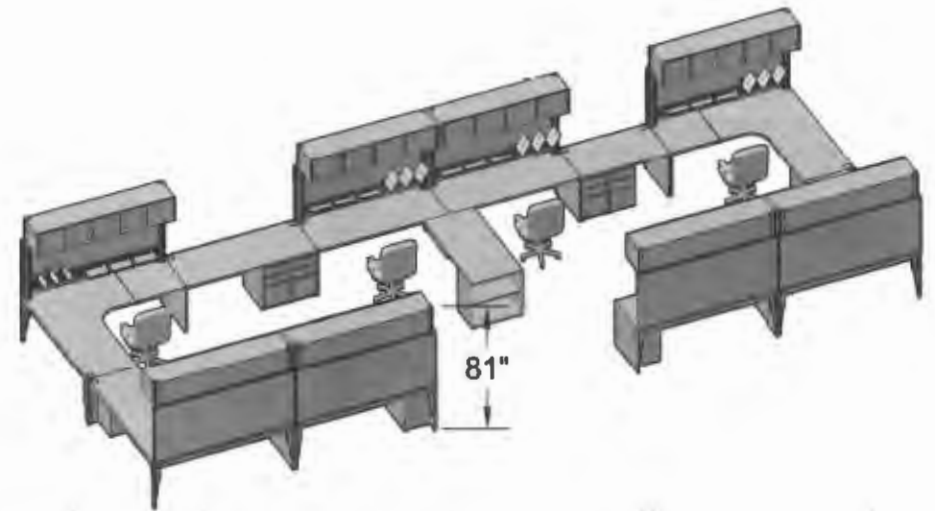
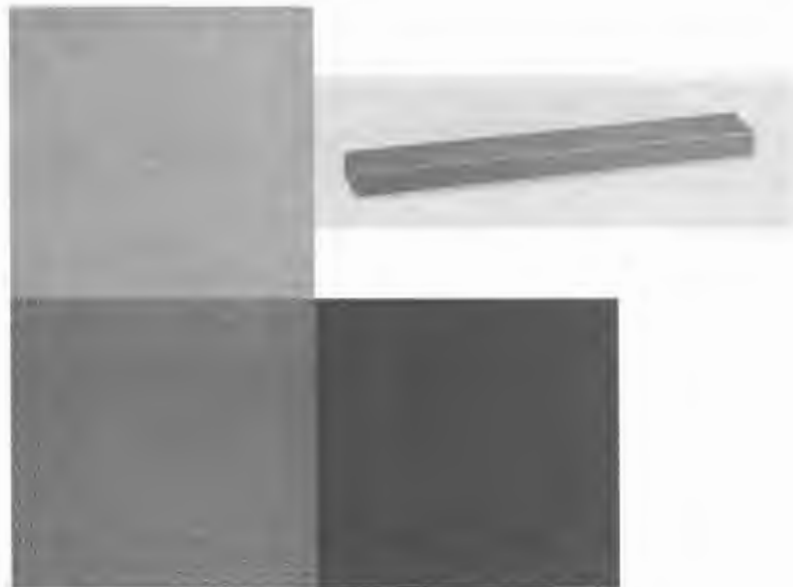
Edge - Stainless

Pull Style/Finish - Rectilinear/Granite

Tackboard Fabric - Teknion Wales Newport

Accessories Package: ECA Power, Keyboard Tray, CPU Holder, Dual Monitor Arm, LED Task Light, 3 Paper Trays, 3 Division Sorters

Code: D3-b



Rm 153

Boone County 911 Center Typicals – Shared Office

Manufacturer: Teknion

Finishes: Laminate - Stainless

Metal - Granite

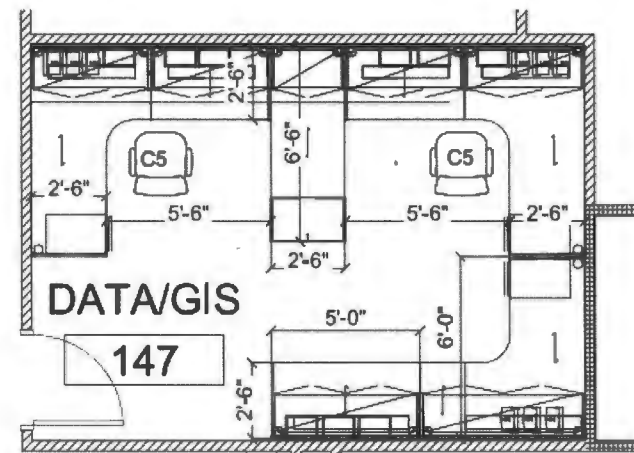
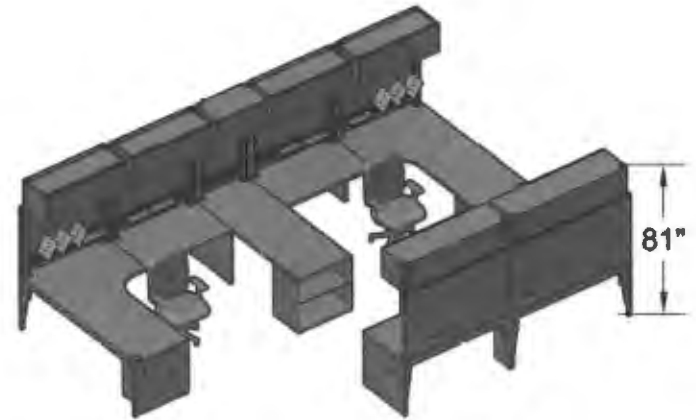
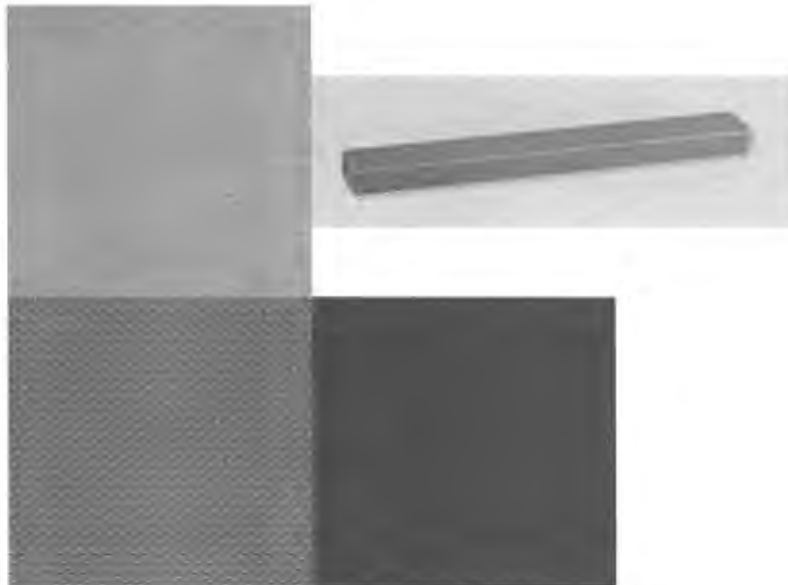
Edge - Stainless

Pull Style/Finish - Rectilinear/Granite

Tackboard Fabric - Teknion Wales Newport

Accessories Package: ECA Power, Keyboard Tray,
CPU Holder, Dual Monitor Arm, LED Task Light,
3 Paper Trays, 3 Division Sorters

Code: D3-c

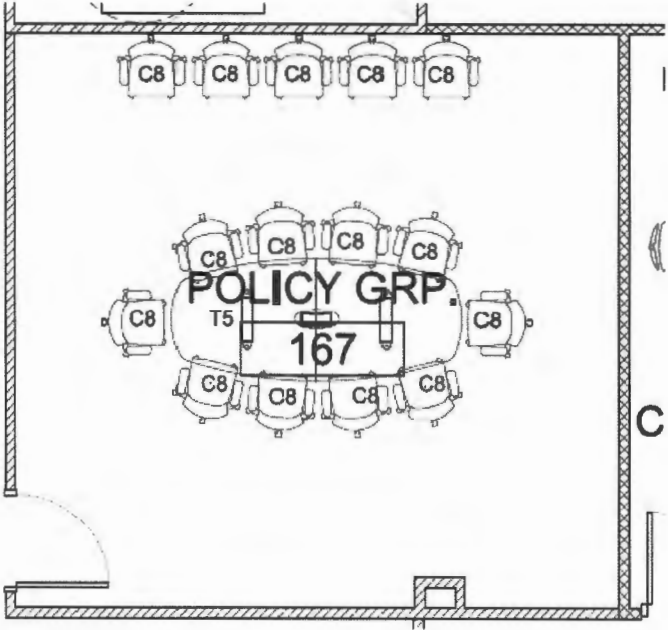
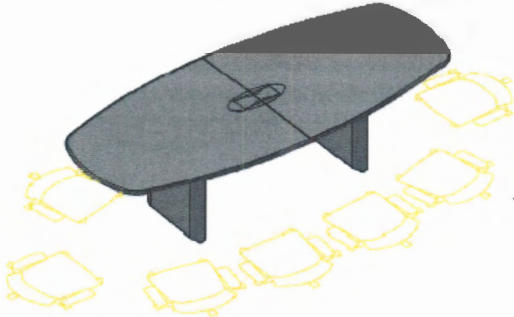


Rm 147

Boone County 911 Center Typicals – Conference Room

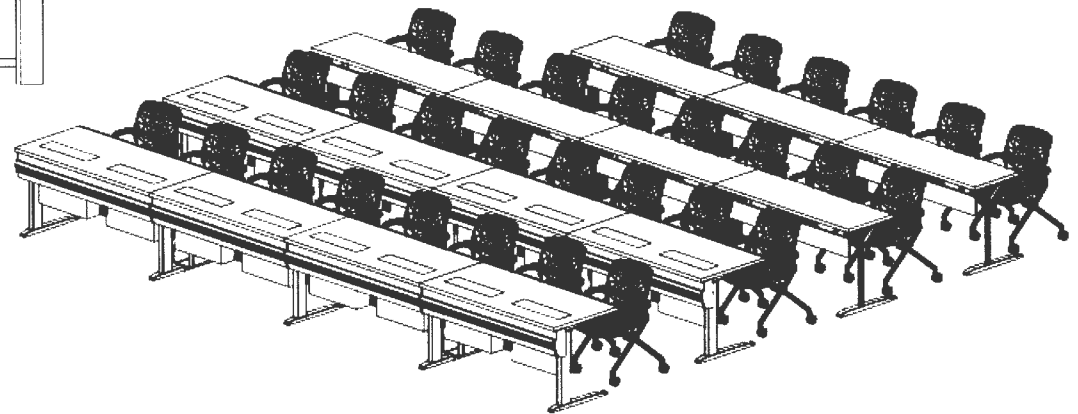
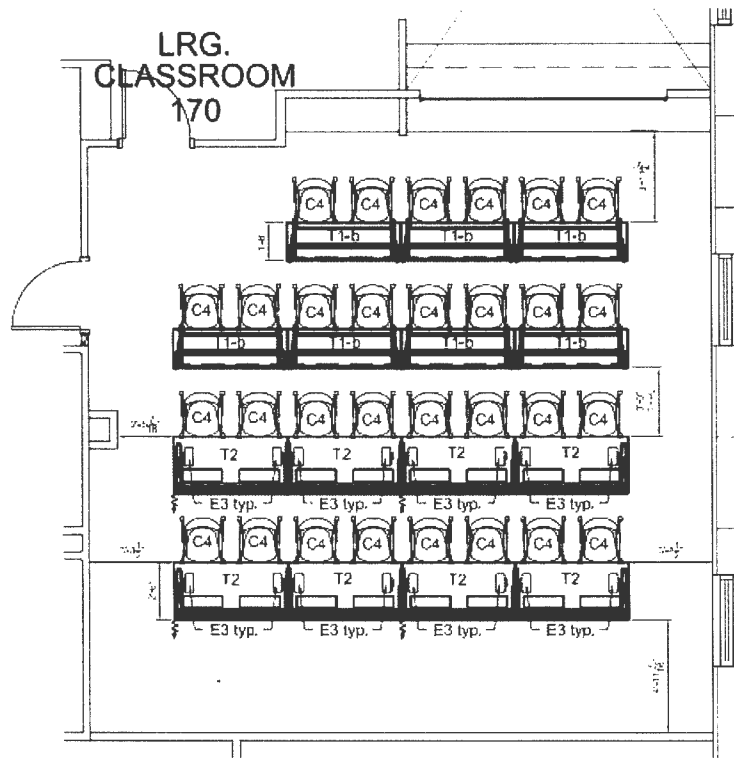
Manufacturer: Teknion
Finishes: Laminate - Stainless
Metal - Granite
Edge - Stainless

Code: D4



Rms 117,166,167

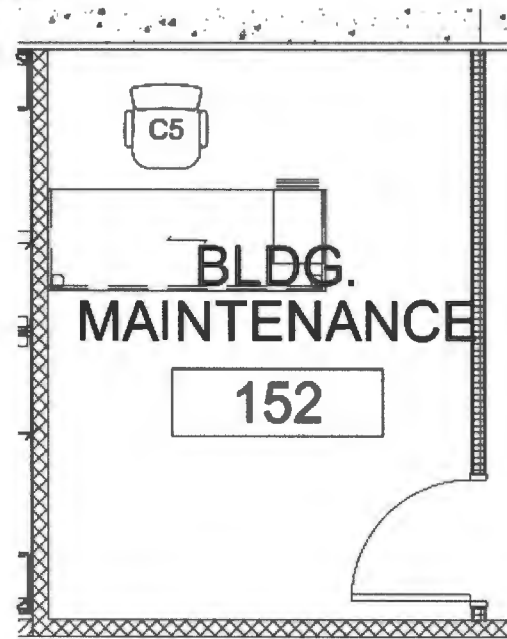
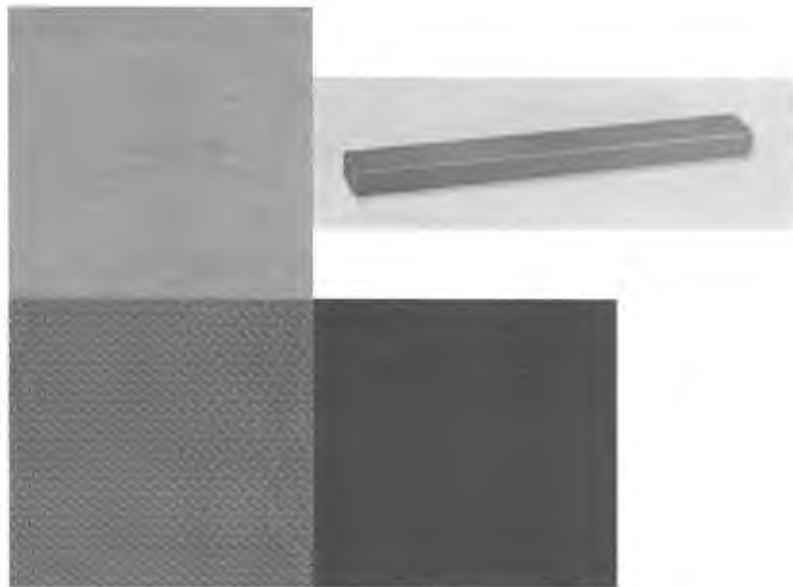
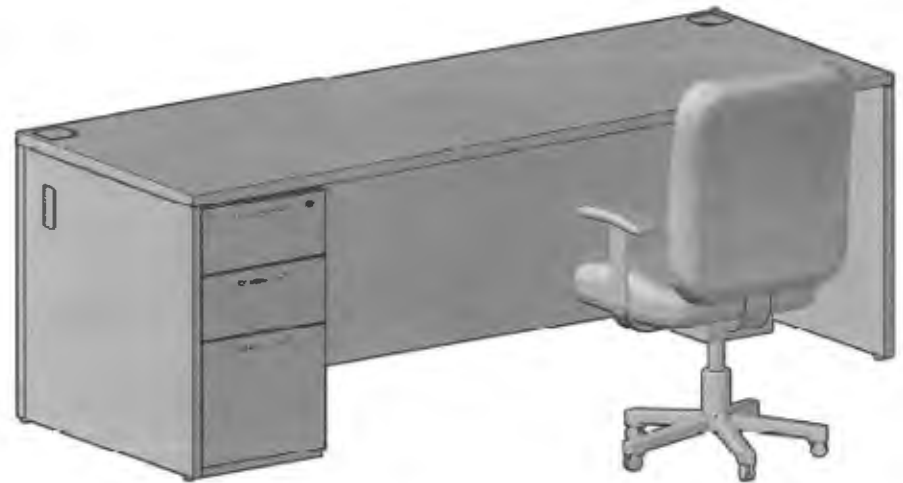
Boone County 911 Center
Large Classroom 170
Code: D5



**Boone County 911 Center
Building Maintenance 152**

**Manufacturer: Teknion
Finishes: Laminate - Stainless
Metal - Granite
Edge - Stainless
Pull Style/Finish - Rectilinear/Granite**

Code: D6



Rm 152

Boone County 911 Center Seating

Manufacturer: KI

Style: Versa Basic Chair

Model #: VBWAL/WG/NFRGRPP1REVERB/27.196.084.P27.144.092

MK:16111451

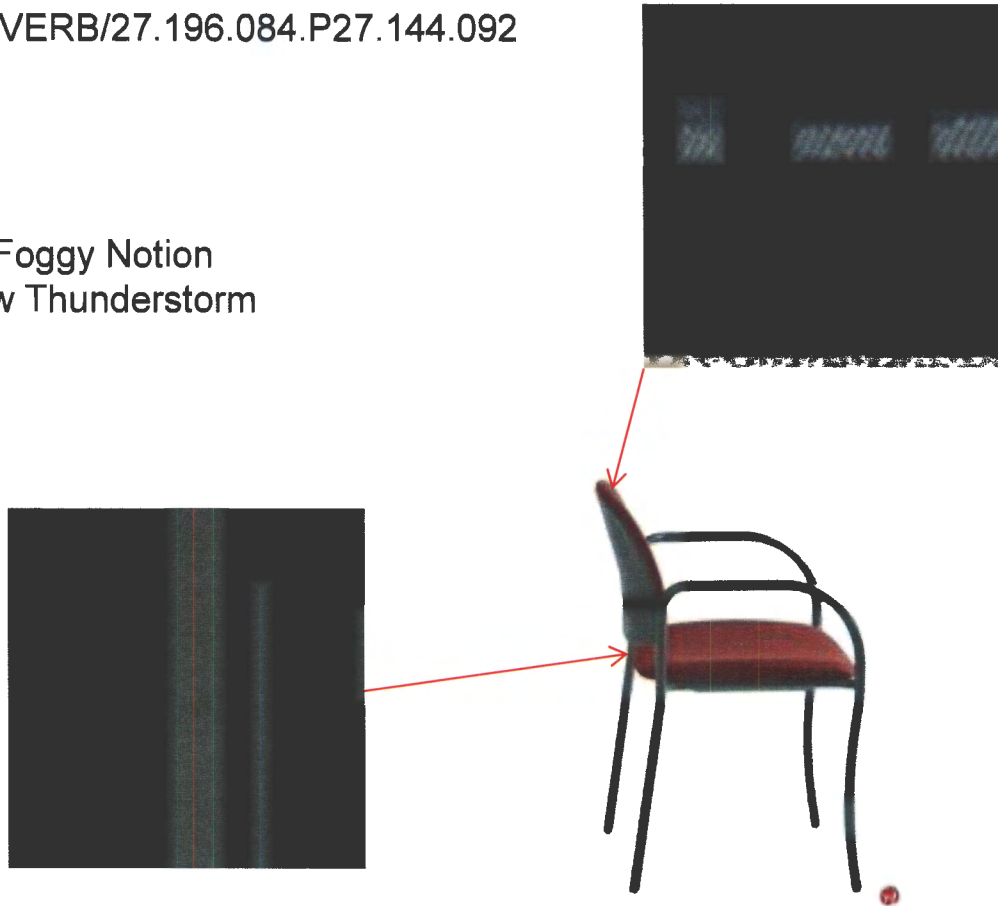
Code:C1

Color/Finish: Warm Grey

Fabric: Back - Pallas Textiles Reverb Foggy Notion

Seat - Pallas Textiles Holy Cow Thunderstorm

Quantity: 43



Boone County 911 Center Seating

Manufacturer: KI

Style: Versa XL Chair

Model #: VXLAN/WG/NFRGRPP1REVERB/27.196.084.P/P/VRB27.144.092

MK:16111453

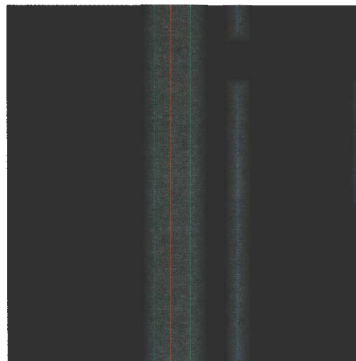
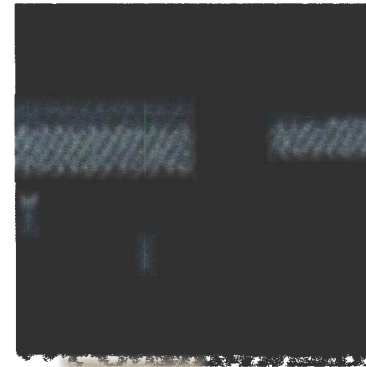
Code: C2

Color/Finish: Warm Grey

Fabric: Back - Pallas Textiles Reverb Foggy Notion

Seat - Pallas Textiles Holy Cow Thunderstorm

Quantity: 1



Boone County 911 Center Seating

Manufacturer: Carolina
Style: Orchestra Mini Recliner
Model #: 1478-R
Code: C3

Color/Finish: Honey Maple
Fabric: ArcCom Fabric Moon Beam Midnight #8

Quantity: 1



Boone County 911 Center Seating

Manufacturer: KI

Style: Torsion on the Go!

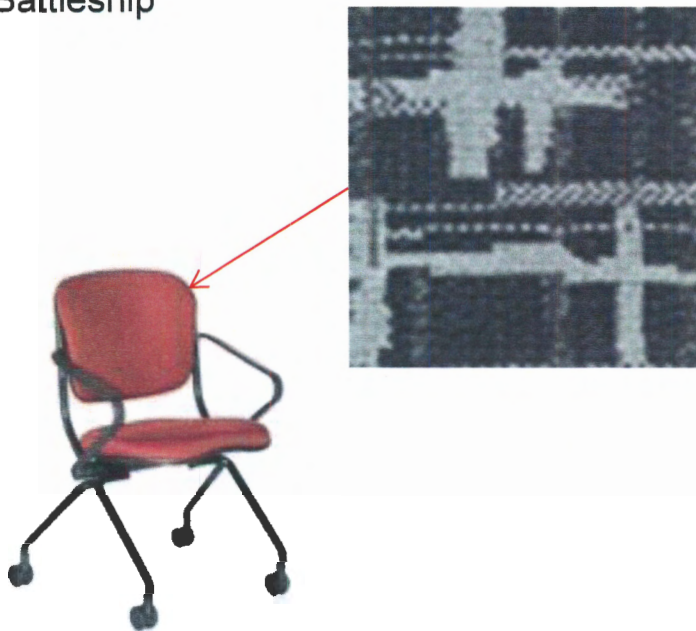
Model #: TGWAUB/CH/NFRGRPP/GRILLCLOTH/27.197.112P/C-NFR/PWG

Code: C4

Color/Finish: Warm Grey

Fabric: Pallas Textiles Grill Cloth Battleship

Quantity: 76



Boone County 911 Center Seating

Manufacturer: KI

Style: Impress Task Chair

Model #: KI62/JR39/NF/POLY/NFR SOFT KNIT/SMOKE/C-NS/SLD

Code: C5

Color/Finish: N/A

Fabric: KI Soft Knit Smoke

Quantity: 28



**Boone County 911 Center
Seating**

**Manufacturer: KI
Style: CrossRoads Wood Armchair
Model #: CRCHRA18/M/MMT
Code: C6**

**Color/Finish: Monticello Maple
Fabric: N/A**

Quantity: 12



Boone County 911 Center Seating

Manufacturer: KI

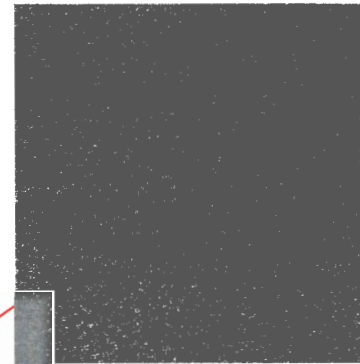
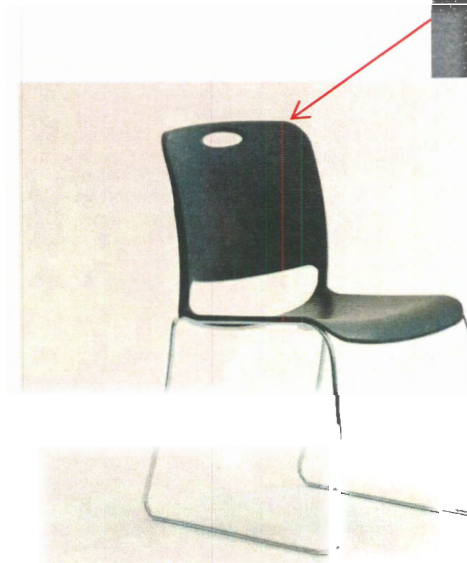
Style: Maestro Chair

Model #: MSP/WG/NFR/PWG/NS

Code: C7

Color/Finish: Frame - Warm Grey
Seat/Back - Warm Grey

Quantity: 12

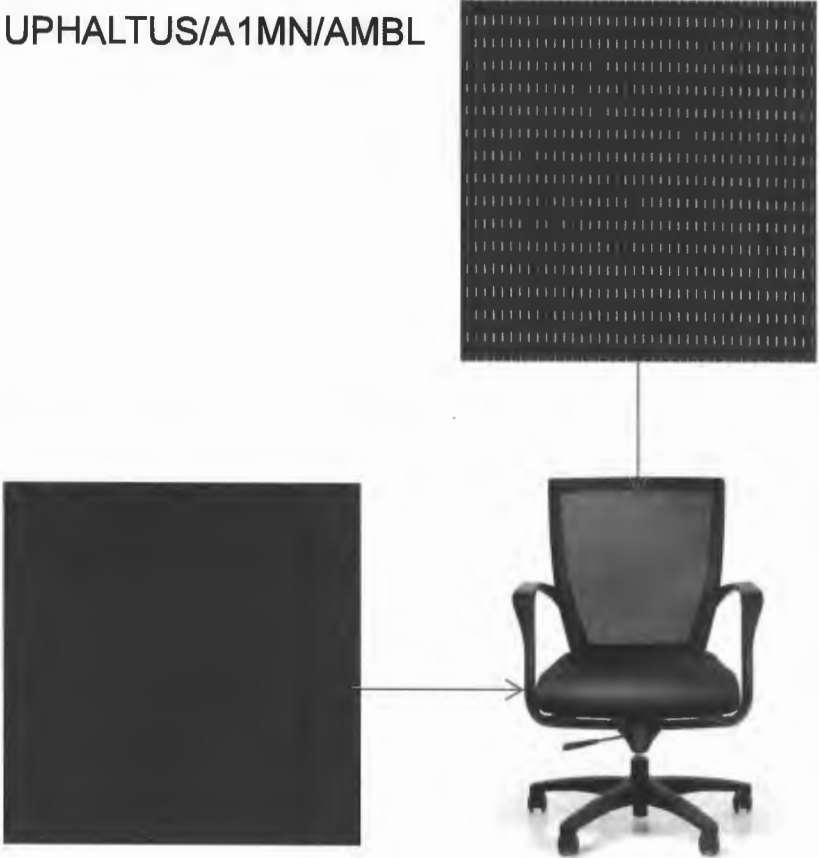


**Boone County 911 Center
Seating**

Manufacturer: KI
Style: Altus Mesh Conference Chair
Model #: ALTCLA/P/AR/C/NFRA1A1UPHALTUS/A1MN/AMBL
Code: C8

Color/Finish: N/A
Fabric: Back - KI Mesh Black
 Seat - KI Black Upholstery

Quantity: 35



Boone County 911 Center Tables

Manufacturer: KI

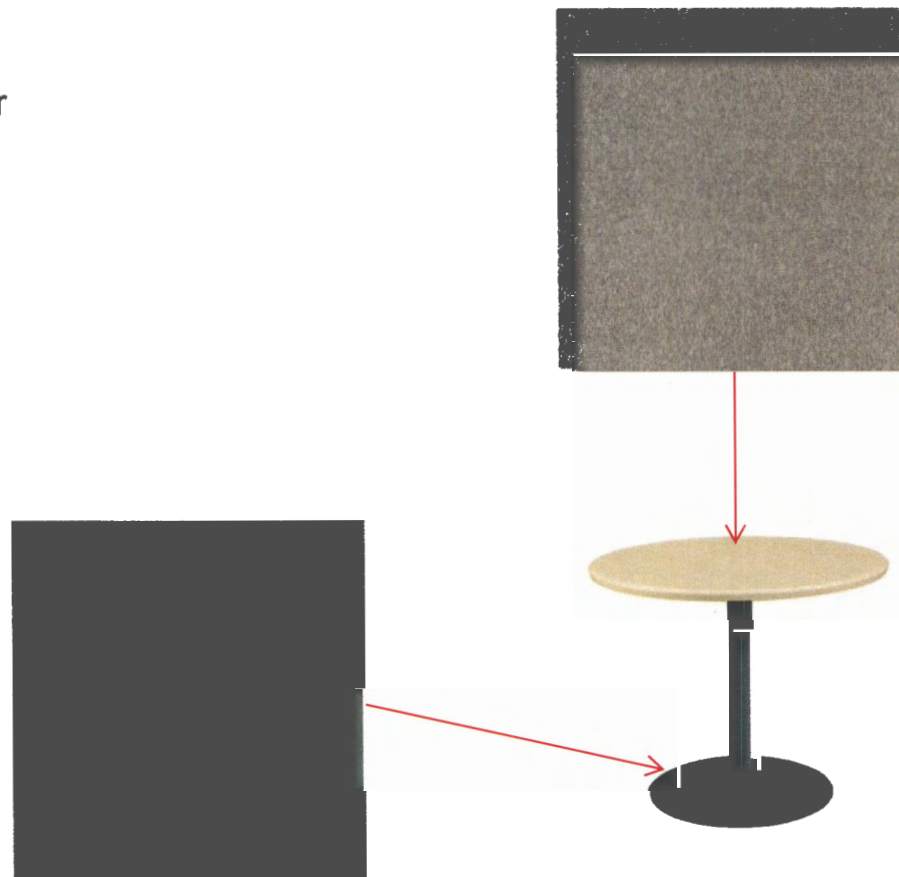
Style: Round Portico Table

Model #: PR35FX-74P/EWG Standard/LCA/CH-NCST/PWG-NO-NWMODINFO2

Code: T1-a

Finishes: Laminate - Canyon Zephyr
Metal - Starlight Silver

Quantity: 3

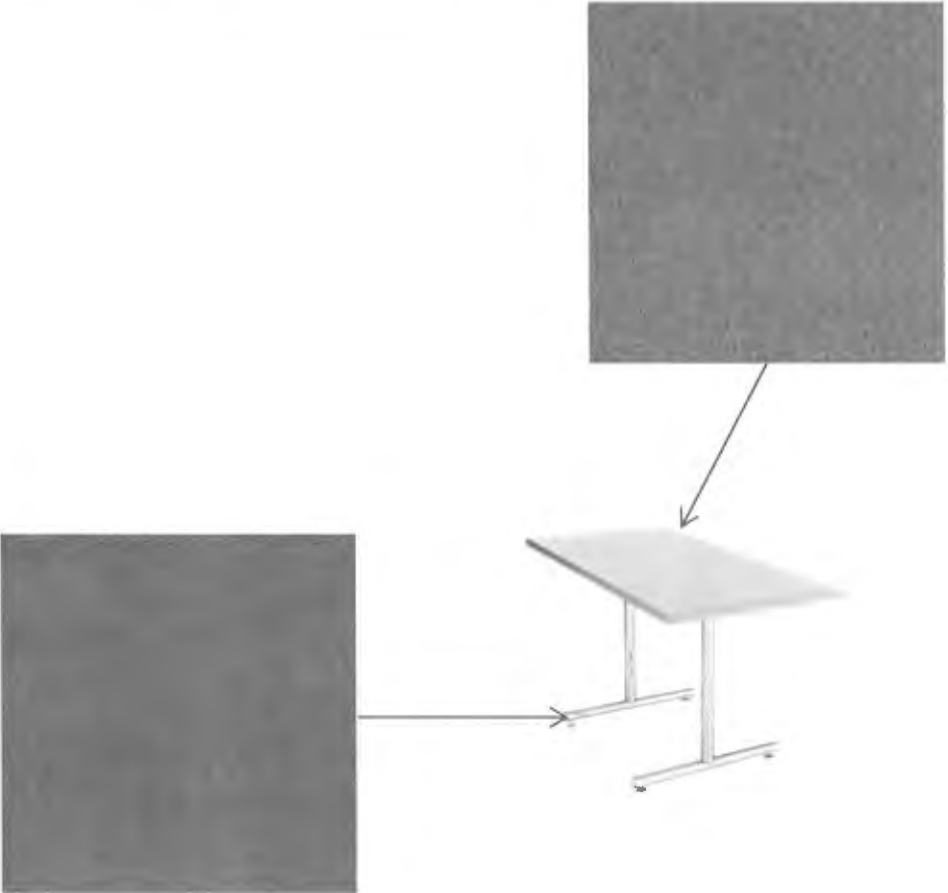


**Boone County 911 Center
Tables**

Manufacturer: KI
Style: Portico Table
Model #: P155F/M-74P/EWG Standard/LCA/WG-NCST/PWG-NO-NWMODINFO2
Code: T1-b

Finishes: Laminate - Canyon Zephyr
Metal - Starlight Silver

Quantity: 14



Boone County 911 Center Tables

Manufacturer: KI

Style: Smart Lift Table

Model #: ISMT3060-74P/N/S/ELK STANDARD/LCA/WG/EWG

Leg: ITFL3029/WG

Power: AC8IF.108, AC8JP.29, AC8RPTIT.12, S16111513, S16111514, S16111515

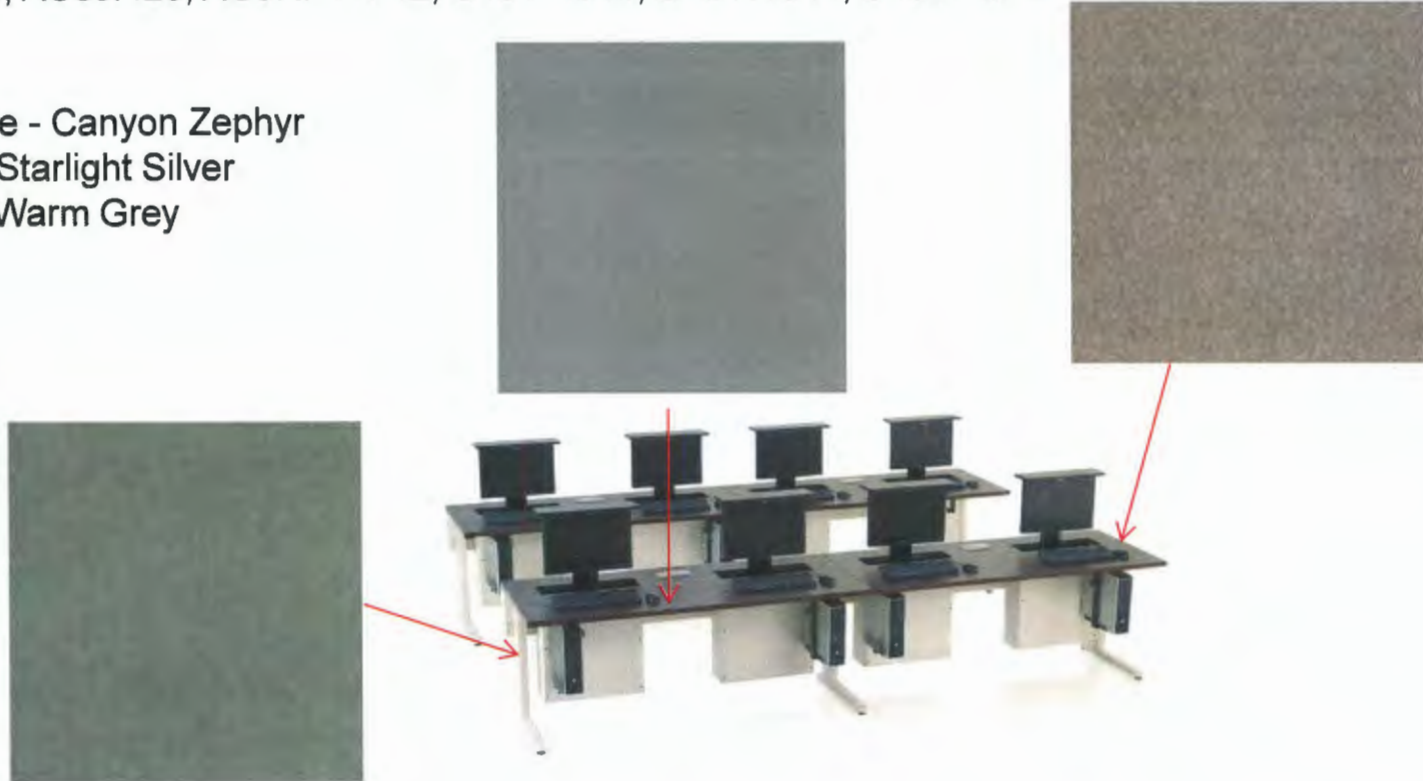
Code: T2

Finishes: Laminate - Canyon Zephyr

Metal - Starlight Silver

Edge - Warm Grey

Quantity: 8

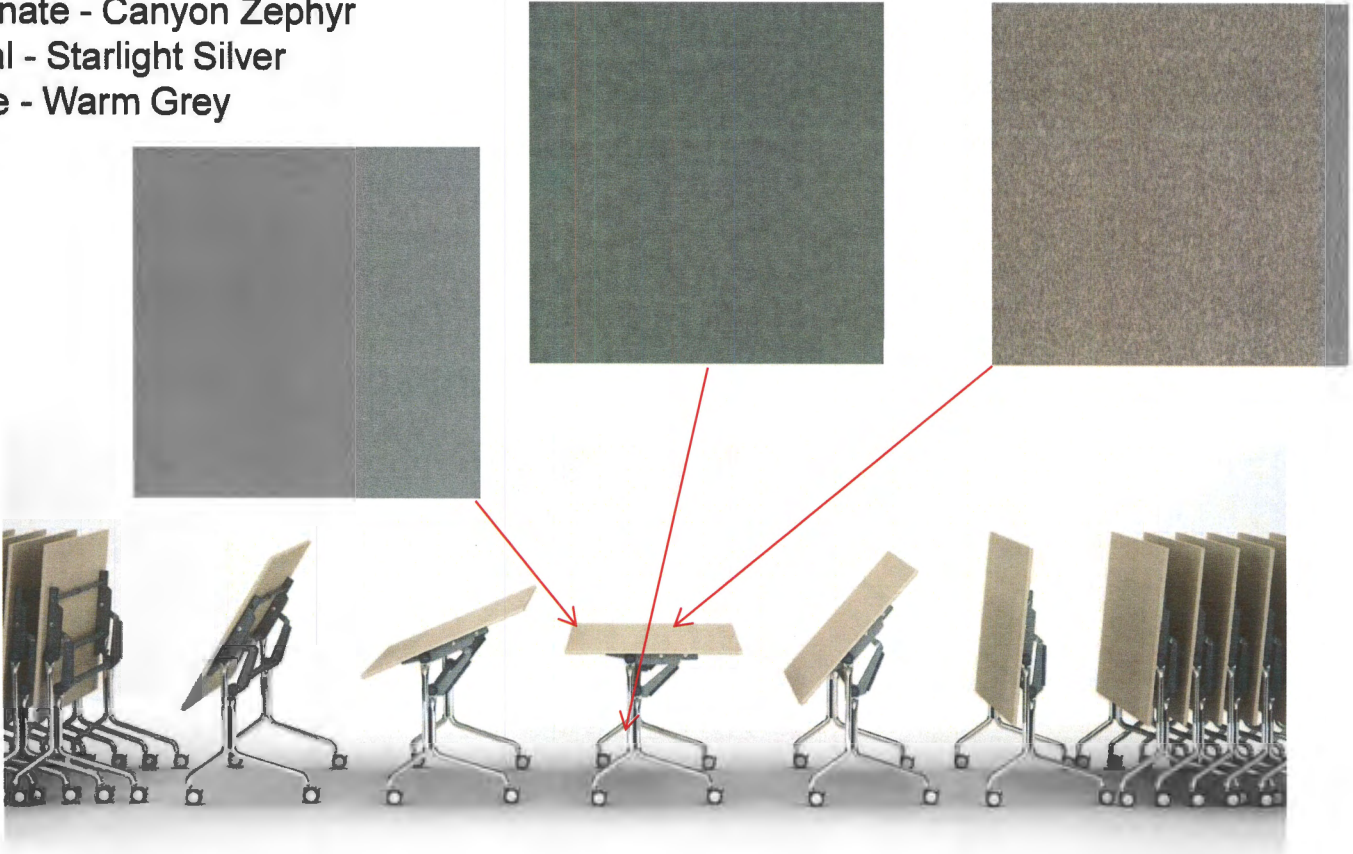


Boone County 911 Center Tables

Manufacturer: KI
Style: Hurry Up! Table
Model #: HUN2060-74P
Code: T3

Finishes: Laminate - Canyon Zephyr
Metal - Starlight Silver
Edge - Warm Grey

Quantity: 4

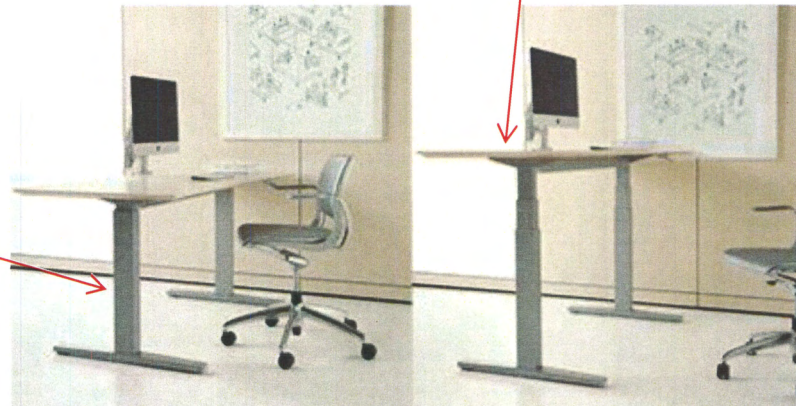
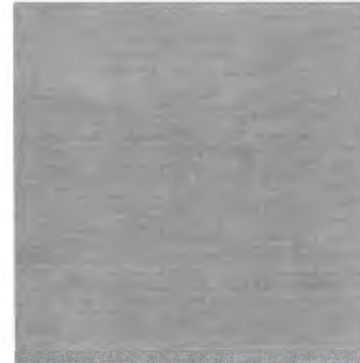


Boone County 911 Center Tables

Manufacturer: Teknion
Style: Livello Height Adjustable Table
Model #: LVWR7SL3072 A JG 6 SV FOUNDAT J NN S N
Code: T4

Finishes: Laminate - Stainless
Metal – Granite

Quantity: 1

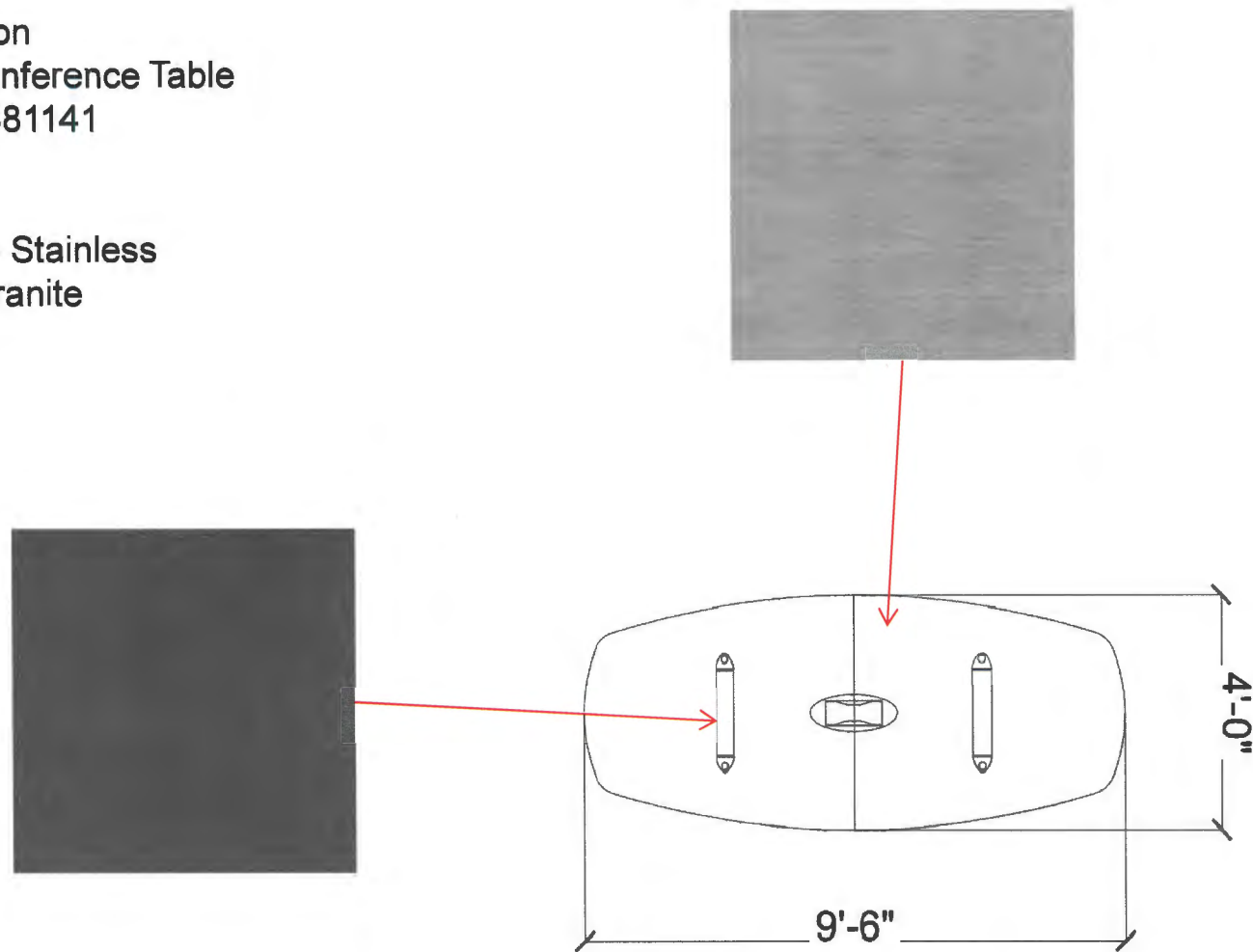


Boone County 911 Center Tables

Manufacturer: Teknion
Style: Expansion Conference Table
Model #: BCMCRR481141
Code: T5

Finishes: Laminate - Stainless
Metal – Granite

Quantity: 3



Boone County 911 Center Tables

Manufacturer: OFS

Style: Meeting Room Table & Base

Model #: Table Top - CT3-42-4G 1 MHM EM QR
Base - CB-04 1 MHM

Code: T6

Finishes: Honey Maple

Quantity: 2



Boone County 911 Center Tables

Manufacturer: Brill

Style: End Table

Model #: 5130

Code: T7

Finishes: Pecan Finish on Oak #201

Quantity: 4



**Boone County 911 Center
Tables**

**Manufacturer: OFS
Style: Calypso End Table
Model #: C06-2424CT MHM
Code: T8**

Finishes: Honey Maple

Quantity: 2



Boone County 911 Center Tables

Manufacturer: OFS

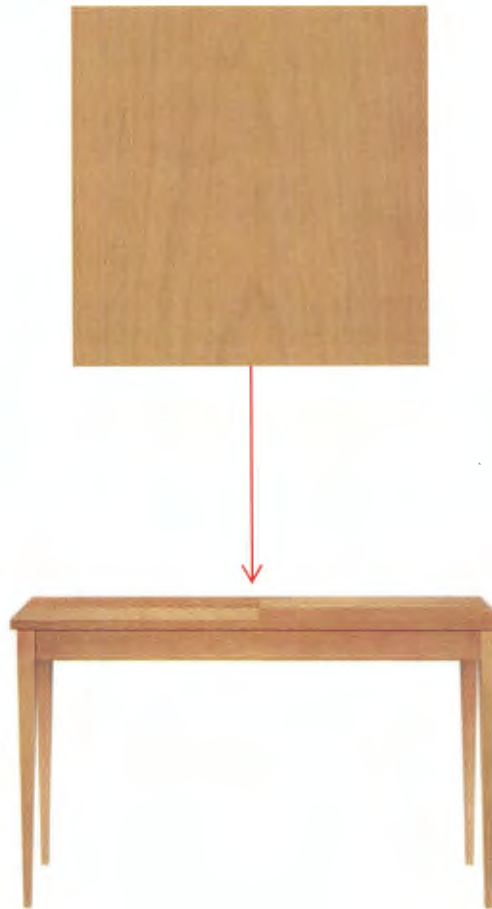
Style: Calypso Coffee Table

Model #: C06-4222MT MHM

Code: T9

Finishes: Honey Maple

Quantity: 1

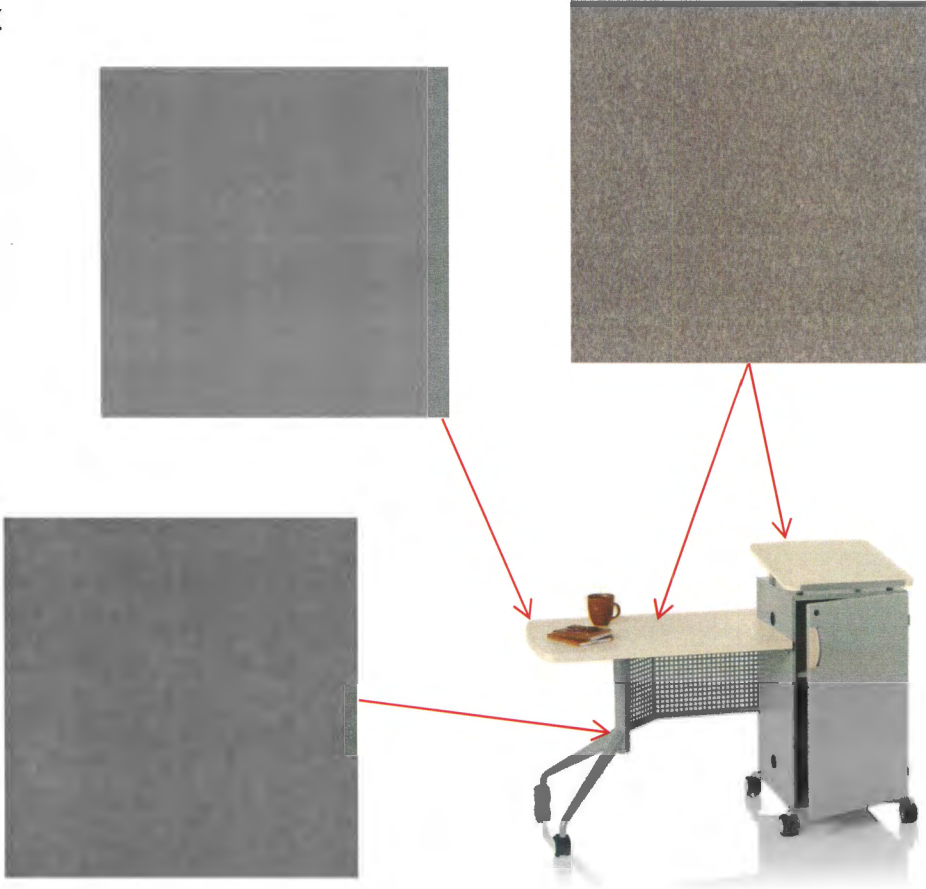


Boone County 911 Center Tables

Manufacturer: KI
Style: All Terrain Mobile Instructors Desk
Model #: ATMTD2454-74P-S2
Code: T10

Finishes: Laminate - Canyon Zephyr
Metal - Starlight Silver
Edge - Warm Grey

Quantity: 1



**Boone County 911 Center
Accessories**

**Manufacturer: Teknion
Style: Mast Dual Flat Panel Monitor Arms
Model #: YMSTM211Y
Code: E1**

Finishes: Silver

Quantity: 26



**Boone County 911 Center
Accessories**

**Manufacturer: Teknion
Style: Keyboard Tray
Model #: YKT1B1
Code: E2**

Finishes: Silver

Quantity: 26



**Boone County 911 Center
Accessories**

Manufacturer: Teknion

Style: CPU Holder

Model #: YKCU1

Code: E3

Finishes: Silver

Quantity: 42



**Boone County 911 Center
Accessories**

**Manufacturer: Electri-Cable Assemblies
Style: Seclusion USB Series – 3 Power/2 USB
Model #: SECL-3-USB-GW72
Code: E4**

Finishes: White

Quantity: 26



**Boone County 911 Center
Accessories**

**Manufacturer: Light Corp
Style: Reed Premier
Model #: RP.44.SO.PS60
Code: E5**

Finishes: White

Quantity: 26

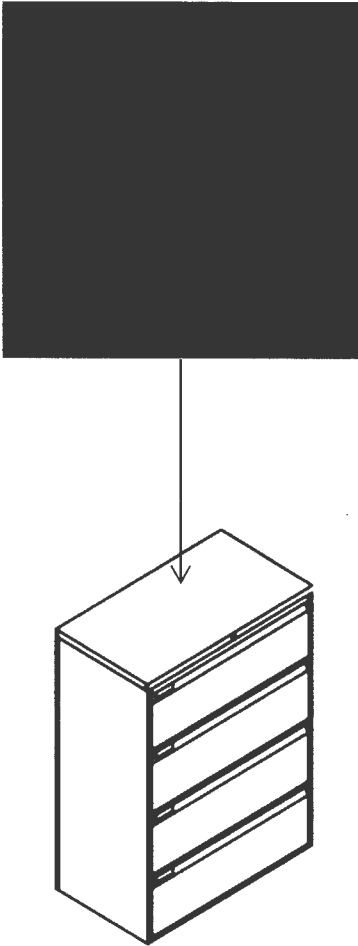


**Boone County 911 Center
Storage**

Manufacturer: Teknion
Style: Ledger Lateral File
Model #: LLF40L1836D1AW2
Code: F1

Finishes: Granite

Quantity: 4

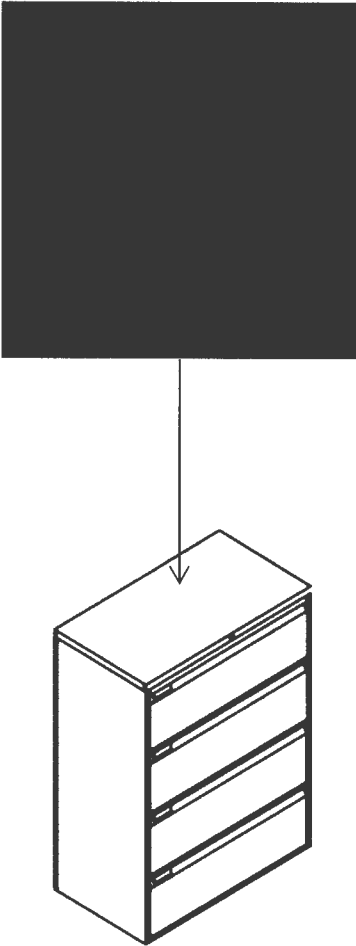


**Boone County 911 Center
Storage**

Manufacturer: Teknion
Style: Ledger Lateral File
Model #: LLF40L1830D1AW2
Code: F2

Finishes: Granite

Quantity: 4



Boone County 911 Center Bedding

Manufacturer: Brill
Style: EZ Loft Single Beds
Model #: 3134
Code: O1

Finishes: Pecan Finish on Oak

Quantity: 12



**Boone County 911 Center
Bedding**

**Manufacturer: Norix
Style: Twin Mattress
Model #: MNF6-3680
Code: O2**

Finishes: N/A

Quantity: 12



**Boone County 911 Center
Bedding**

**Manufacturer: Brill
Style: iTrek Metal Night Stand Shelf
Model #: BBF96-006
Code: O3**

Finishes: Arctic Silver Powdercoat

Quantity: 6

