



**Boone County Purchasing**  
613 E. Ash Street, Room 109  
Columbia, MO 65201

## ***Request for Bid (RFB)***

***Amy Robbins, Senior Buyer***  
(573) 886-4392 – Fax: (573) 886-4390  
Email: arobbins@boonecountymo.org

---

### ***Bid Data***

Bid Number: **06-25JAN13**  
Commodity Title: **2013 Mill & Overlay Term & Supply**

### **DIRECT BID FORMAT OR SUBMISSION QUESTIONS TO THE PURCHASING DEPARTMENT**

---

### ***Bid Submission Address and Deadline***

Day / Date: **Friday, January 25, 2013**  
Time: **1:15 P.M. (Bids received after this time will be returned unopened)**  
Location / Mail Address: **Boone County Purchasing Department  
Boone County Annex Building  
613 E. Ash Street, Room 109  
Columbia, MO 65201**  
Directions: The Boone County Annex Building is located on the Southeast corner at 7<sup>th</sup> St. and Ash St. Enter the building from the Southern side. Wheelchair accessible entrance is available on the West side of the building.

---

### ***Bid Opening***

Day / Date: **Friday, January 25, 2013**  
Time: **1:30 P.M. C.S.T.**  
Location / Address: **Boone County Purchasing  
613 E. Ash, Room 109  
Columbia, MO 65201**

---

### ***Pre-Bid Meeting***

Day / Date: **Thursday, January 17, 2013**  
Time: **9:00 a.m.**  
Location / Address: **Room 332  
Boone County Government Center  
801 E. Walnut  
Columbia, Missouri, 65201**

***Bid Contents***

---

- 1.0: **Introduction and General Conditions of Bidding**
- 2.0: **Primary Specifications**
- 3.0: **Response Presentation and Review**
- 4.0: **Response Form**
- Attachment A **Statement of Bidders Qualifications**
- Debarment Certificate**
- Standard Terms and Conditions**
- Prevailing Wage Order 19**
- Affidavit of Compliance with OSHA**
- Affidavit of Compliance with the Prevailing Wage Law**
- Instructions for Compliance with House Bill 1549**
- Work Authorization Certification**
- Certification of Individual Bidder**
- Affidavit for Certification of Individual Bidder**
- Paving Improvements Traffic Control Detail Sheet**
- Dig Out and Repair Detail**
- No Bid Response Form**

## 1. Introduction and General Conditions of Bidding

- 1.1. **INVITATION** - The County of Boone, through its Purchasing Department, invites responses, which offer to provide the goods and/or services identified on the title page, and described in greater detail in Section 2.
- 1.2. **DEFINITIONS**
- 1.2.1. **County** - This term refers to the County of Boone, a duly organized public entity. It may also be used as a pronoun for various subsets of the County organization, including, as the context will indicate:  
*Purchasing* - The Purchasing Department, including its Purchasing Director and staff.  
*Department(s) or Office(s)* - The County Department(s) or Office(s) for which this Bid is prepared, and which will be the end user(s) of the goods and/or services sought.  
*Designee* - The County employee(s) assigned as your primary contact(s) for interaction regarding Contract performance.
- 1.2.2. **Bidder / Contractor / Supplier** - These terms refer generally to businesses having some sort of relationship to or with us. The term may apply differently to different classes of entities, as the context will indicate.  
*Bidder* - Any business entity submitting a response to this Bid. Suppliers, which may be invited to respond, or which express interest in this bid, but which do not submit a response, have no obligations with respect to the bid requirements.  
*Contractor* - The Bidder whose response to this bid is found by Purchasing to meet the best interests of the County. The Contractor will be selected for award, and will enter into a Contract for provision of the goods and/or services described in the Bid.  
*Supplier* - All business(s) entities which may provide the subject goods and/or services.
- 1.2.3. **Bid** - This entire document, including attachments. A Bid may be used to solicit various kinds of information. The kind of information this Bid seeks is indicated by the title appearing at the top of the first page. A "Request for Bid" is used when the need is well defined. A "Request for Proposal" is used when the County will consider solutions, which may vary significantly from each other or from the County's initial expectations.
- 1.2.4. **Response** - The written, sealed document submitted according to the Bid instructions.
- 1.3. **BID CLARIFICATION** - Any questions or clarifications concerning bid documents should be addressed to Amy Robbins, Senior Buyer, 613 E. Ash Street, Room 109, Columbia, Missouri 65201. Telephone (573) 886-4392 Fax (573) 886-4390, E-mail: arobbins@boonecountymmo.org.
- 1.3.1. **Bidder Responsibility** - The Bidder is expected to be thoroughly familiar with all specifications and requirements of this Bid. Bidder's failure or omission to examine any relevant form, article, site or document will not relieve them from any obligation regarding this Bid. By submitting a Response, Bidder is presumed to concur with all terms, conditions and specifications of this Bid.
- 1.3.2. **Bid Amendment** - If it becomes evident that this Bid must be amended, the Purchasing Department will issue a formal written Amendment to all known prospective Bidders. If necessary, a new due date will be established.
- 1.4. **AWARD** - Award will be made to the Bidder(s) whose offer(s) provide the greatest value to the County from the standpoint of suitability to purpose, quality, service, previous experience, price, lifecycle cost, ability to deliver, or for any other reason deemed by Purchasing to be in the best interest of the County. Thus, the result will not be determined by price alone. The County will be seeking the least costly outcome that meets the County needs as interpreted by the County. The County reserves the right to award this bid on an item by item basis, or an "all or none" basis, whichever is in the best interest of the County.
- 1.5. **CONTRACT EXECUTION** - This Bid and the Contractor's Response will be made part of any resultant Contract and will be incorporated in the Contract as set forth, verbatim.
- 1.5.1. **Precedence** - In the event of contradictions or conflicts between the provisions of the documents comprising this Contract, they will be resolved by giving precedence in the following order:  
 1) the provisions of the Contract (as it may be amended);  
 2) the provisions of the Bid;

- 3) the provisions of the Bidder's Response.
- 1.6. **COMPLIANCE WITH STANDARD TERMS AND CONDITIONS** - Bidder agrees to be bound by the County's standard "boilerplate" terms and conditions for Contracts, a sample of which is attached to this Bid.

**2. Primary Specifications**

- 2.1. **ITEMS TO BE PROVIDED** - Boone County, hereafter referred to as "County", proposes to contract with an individual(s) or organization(s), hereinafter referred to as "Contractor" for a Term and Supply contract for the furnishing of all labor, materials, equipment, coordinating and scheduling, and related items required to provide materials for and/or perform work required of the bid items within.
- 2.1.1. **Asphalt Overlay, BP-2, Virgin** (Item 4.7.1.): Plant mix pavement in conformance with Missouri Standard Specifications for Highway Construction, 2011, Section 401. This mix will contain no recycled asphalt pavement or shingles. Contractor must submit a MoDOT approved Job Mix Formula no more than one year old. At County's discretion, this item may be placed in a single lift, or in multiple lifts (wedge/leveling course and surface course).
- 2.1.2. **Asphalt Overlay, BP-2, R.A.P.** (Item 4.7.2.): Plant mix pavement in conformance with Missouri Standard Specifications for Highway Construction, 2011, Section 401. This mix may contain up to 20% recycled asphalt pavement, however no shingles will be included in this mix. Contractor must submit a MoDOT approved Job Mix Formula no more than one year old. At County's discretion, this item may be placed in a single lift, or in multiple lifts (wedge/leveling course and surface course).
- 2.1.3. **Surface Milling, Asphalt, Contractor Haul-off** (Item 4.7.3.): Milling of asphalt surfaced streets to a depth prescribed by the County. Typical applications will be 1-3" deep depending on conditions. Contractor will be responsible for haul-off and retainage of millings.
- 2.1.4. **Surface Milling, Asphalt, County Haul-off** (Item 4.7.4.): Milling of asphalt surfaced streets to a depth prescribed by the County. Typical applications will be 1-3" deep depending on conditions. County will be responsible for haul-off and retainage of millings.
- 2.1.5. **Surface Milling, Concrete, Contractor Haul-off** (Item 4.7.5.): Milling of concrete surfaced streets to a depth prescribed by the County. Typical applications will be 1-3" deep depending on conditions. Contractor will be responsible for haul-off and retainage of millings.
- 2.1.6. **Surface Milling, Concrete, County Haul-off** (Item 4.7.6.): Milling of concrete surfaced streets to a depth prescribed by the County. Typical applications will be 1-3" deep depending on conditions. County will be responsible for haul-off and retainage of millings.
- 2.1.7. **Surface Milling, Butt-Joint** (Item 4.7.7.): Milling of butt-joints at driveways, intersections, and project terminus. This milling may occur in asphalt or concrete pavements. Width of butt joints will typically be 72 inches on intersecting public roads; 24" on driveways.
- 2.1.8. **Dig Out Repair, Asphalt, Typical** (Item 4.7.8.): Dig-Out-Repair as shown in attached 'Dig Out and Repair Detail, Revised 8-16-10'. This repair consists of excavation of existing material to 16 inches below existing surface, replaced with woven geotextile fabric, two 6 inch lifts of compacted 1.5" minus aggregate, one four inch lift of compacted bituminous base to existing pavement surface. See attached detail.
- 2.1.9. **Dig Out Repair, Asphalt, Hasty** (Item 4.7.9.): Dig-Out-Repair which will typically be used in the event of a 'blow-up' of existing asphalt pavement during paving operations. Contractor will remove loose material until stable material is reached. Excavated area will be filled with BP-2 asphalt pavement compacted in maximum 4 inch lifts to match existing surface. This item will be paid by hour of time spent performing this work, in half hour increments. Material will be paid for with Item 4.7.1 or 4.7.2.
- 2.1.10. **Dig Out Repair, Concrete, Hasty** (Item 4.7.10.): Dig-Out-Repair which will typically be used in the event of a 'blow-up' of existing concrete pavement during paving operations. Contractor will remove unstable concrete pavement and unsuitable base material until stable material is reached. The excavated area will be filled with BP-2 asphalt pavement compacted in maximum 4 inch lifts to match existing surface. This item will be paid by hour of time spent performing this work, in half hour increments. Material will be paid for with Item 4.7.1 or 4.7.2.
- 2.1.11. **Rock Driveway Transitions** (Item 4.7.11.): This item will use compacted 1" minus aggregate to create transitions between new pavement surface and existing gravel driveways.
- 2.1.12. **Temporary Centerline Markers** (Item 4.7.12.): Reflector type temporary centerline markers will be placed on 40' centers delineating lanes of traffic following a resurfacing project.

- 2.1.13. **Restoration** (Item 4.7.13.): This item will typically be used to restore roadside areas that are disturbed due to dig-out repairs. For such dig-out repairs, this item will be paid at 1' width the entire length of the repair; additional restoration outside of the 1' width will be contractor's responsibility.
- 2.1.14 **Additional Work** (Item 4.7.14): This item will be used when due to circumstances within a project additional work needs to be done by the contractor that is not specified in this contract. Contractor shall indicate hourly rate for labor and equipment. If additional material is needed that is not specified in this contract, the contractor shall bill the County for the actual cost of the material plus 20%.
- 2.2. **Scope** – There is no minimum quantity of work expressed or implied associated with this contract. However, the below table shows the work intended to be completed with this contract in 2013.
- 2.2.1. **Intended work:**

**\*Note – This list is subject to change, shows the County's intent for the use of this contract \***

2013 Projects	Asphalt	Surface Milling
	Ton	SY
Old No. 7	1562	200 (asphalt)
Friendship Church Rd.	651	0
Mary Ann Circle	360	0
River Oaks Rd.	683	0
Trails West Subdivision	3044	23400 (asphalt)
<b>Total</b>	<b>6300</b>	<b>23600</b>

- 2.3. **CONTRACT DURATION** - The contract shall be effective from the date of award through December 31, 2013.
- 2.4. The unit prices for the items identified on the Response Form shall remain fixed for the identified original contract period.
- 2.5. **CONTRACT EXTENSION** – The County Purchasing Director may exercise the option to extend the contract on a month-to-month basis for a maximum of six (6) months from the date of termination if it is deemed to be in the best interest of Boone County.
- 2.6. **CONTRACT DOCUMENTS** - The successful bidder(s) shall be obligated to enter into a written contract with the County within 30 days of award on contract forms provided by the County. If bidders desire to contract under their own written agreement, any such proposed agreement shall be submitted in blank with their bid. County reserves the right to modify any proposed form agreement or withdraw its award to a successful bidder if any proposed agreement contains terms and conditions inconsistent with its bid or are unacceptable to county legal counsel.
- 2.7. **PRICING** – All prices shall be as indicated on the Response Form. The County shall not pay nor be liable for any other additional costs including but not limited to: taxes, packing, handling, shipping and freight, insurance, interest, penalties, termination payments, attorney fees, liquidated damages, etc. Additionally, the County shall not be subject to any minimum annual quantities or total prices.
- 2.8. **TECHNICAL REQUIREMENTS** - All materials provided and work done shall be in accordance with the Missouri Standard Specifications for Highway Construction, 2011.
- 2.9. **SPECIAL PROVISIONS**
- 2.9.1. **Asphalt Cement Price Index**
- 2.9.1.1. Adjustments will be made to the payments due the Contractor for any plant mix bituminous base, plant mix bituminous pavement, plant mix bituminous surface leveling and asphaltic concrete pavement that contains PG64-22, PG70-22 or PG76-22 when it has been determined that the monthly average price for the midpoint of the published prices of PG64-22 for St. Louis, Missouri area and Kansas City area has fluctuated from the monthly average price of the month the project was bid. The St. Louis, Missouri area and Kansas City area prices will be obtained from the Asphalt Weekly Monitor® published by Poten & Partners Inc. The monthly base price will be the price from the last published Asphalt Weekly Monitor® prior to MoDOT's monthly bid opening. The monthly base price, established prior to the monthly bid opening, shall apply to payment estimates for the

following month.

2.9.1.2..The adjusted contract unit price will be applied to the actual amount of asphalt binder used by the Contractor for all asphalt items that are set up by the wet ton mix. The adjustment will be applied to projects that have a quantity of asphalt wet ton mix pay items over 100 tons. The percentage of virgin asphalt as shown in the job mix formula, in accordance with Sec 401.4 and Sec 403.4, will be the basis for adjustments for any asphalt mix type placed on the project during the monthly index period. The effective asphalt obtained from the use of recycled asphalt pavement (RAP) will not be eligible for adjustment. The base price index for PG64-22 will be applied to the asphalt mix for mixes using PG64-22, PG70-22 or PG76-22.

2.9.1.3. Basis of Payment - To determine the adjustment for any material specified in this provision the following formula will be used.

$$A = (B \times C) \times (D-E) \times T$$

Where: A = Adjustment for mix placed during monthly average index period

B = Tons of Mix Placed during the monthly average index period

C = % of virgin asphalt binder as listed in the job mix formula in use

D = monthly average price at time mix placement

E = monthly average price at time of bid

T = 1.04225 to account for Missouri State use tax

2.9.1.4. The engineer will make adjustment payments, as defined above, for the applicable work completed during each month except for projects on which the contractor is being charged liquidated damages, due to working beyond the project completion date, in accordance with Sec 108. In this case, the "D" value used for the price adjustment will be either the last "D" value prior to the date that liquidated damage assessment began or the current monthly "D" value, whichever is lower. If the contractor is being charged liquidated damages due to the contract being beyond the project completion date and the current months "D" value results in a deduction, then the current monthly "D" value will be used.

2.9.1.5. Optional This provision is optional. If the bidder wishes to be bound by this provision, the bidder shall execute the acceptance form in the Bid. Failure by the bidder to execute the acceptance form will be interpreted to mean election to not participate in the Asphalt Cement Price Index.

2.9.2. **Warm Mix Asphalt:** The use of Warm Mix Asphalt is allowed as part of this contract. No unit priced deductions will be given for its use.

2.9.3. **Vibratory Screed:** Contractor is required to use an asphalt paver equipped with a vibratory screed for all work performed under this contract. Said vibratory screed shall be functional, calibrated for the material and conditions of the project, and turned on at all times during paving operations.

2.9.4 **Tack Coat:**

(Taken from MoDOT Engineering Policy Guide Section 407.1.4)

**Application** (Sec 407.4.2) If the tack coat is too heavy or too light, an inadequate bond is created and the mat may slip during compaction, which results in shoving and checking. In addition, a slippage failure (cracking) may occur after the pavement has been subjected to traffic. Bleeding may also occur if the tack coat is too heavy.

The tack coat must be uniformly applied to the existing surface at the rate specified in the contract. Generally, the application rate between the existing pavement and the first lift should be in the range of 0.05 to 0.10 gal/yd<sup>2</sup> \*(Residual AC Content). It is strongly recommended to apply a light tack coat between each lift of bituminous pavement. The application rate between lifts should be in the range of 0.02 to 0.05 gal/yd<sup>2</sup> \*(Residual AC

Content).

Depending on the condition of the existing surface, the application rate may need to be adjusted from the specified rate. This is acceptable as long as approval is obtained from the RE and the rate is within the applicable range mentioned above. For example, an open textured surface, such as an SP250 mix, requires more tack than a surface that is tight or dense, such as an SP125 mix. A milled surface requires additional tack because of the increased surface area (from the grooves left by the cutting teeth on the milling machine). A dry, aged pavement also requires a heavier tack coat than a newer pavement. These conditions, and any other possibilities, must be considered when a tack coat is applied.

There is no requirement governing the overlap of a tack coat. However, the best results are generally obtained with a double or triple lap. Therefore, the height of the spray bar on the distributor should be adjusted accordingly.

The tack coat must be allowed to break (cure) prior to spreading mix. Shortly after the tack coat has been applied, its color will change from brown to black as the water in the emulsion begins to evaporate. The emulsion also becomes “tacky” to the touch. The amount of time it takes for the tack coat to break depends on the type and grade of emulsion used, the application rate, the temperature of the existing surface, and the environmental conditions. The tack coat is said to have “set” once all of the water in the emulsion has evaporated. Typically, an emulsion sets in 1 to 2 hours.

If there is reason to believe that the tack coat is being diluted with a material other than water or that the dilution rate is other than what has been reported, a sample should be taken and shipped to the Central Laboratory.

**Tack** (Sec 407.4.2.1) It is extremely important that the tack coat remains on the existing surface in order to create an adequate bond between the existing surface and the mat. Usually, tack is only applied within the length of the lane drop. The tack coat should be allowed to set before it is subjected to construction traffic. Otherwise, the vehicle tires will pick up the tack. At the very least, the amount of construction traffic, including haul trucks, should be minimized.

The tacked surface should be covered with mix the same day. If this is not possible because of equipment problems (plant or paver breakdowns), sand must be lightly distributed over the tacked surface before opening to traffic. This will “blot” the tack, preventing it from being picked up by the traffic, and provide friction to the surface. When paving resumes, the excess sand must be removed before the mix is spread.

**Purpose** (Sec 407.3.1) The purpose of the tack coat is to improve the bond between the existing surface and the roadway pavement. A tack coat shall be applied to provide a bond between old and new wearing courses. The best results occur when the tack is applied to a dry and clean surface, free of loose material.

**Application Rates** (Section 407.3.2) The application rate will vary from 0.03 to 0.15 gal/yd<sup>2</sup> \*(Residual AC Content), depending on the condition of the old pavement surface. The pavement course surface should be evaluated to determine the amount of tack to be applied. A viscous material should be used because very little penetration of the asphaltic oil into the pavement surface is expected. The tack coat should be allowed to become tacky or sticky before the surface course is laid. Emulsions are recommended for tacking on heavily traveled routes. Too much tack can create a slippage plane between the old pavement and the new pavement overlay as the tack coat acts as a lubricant instead of an adhesive. Also too



much tack could result in bleeding of the tack through to the new overlay surface, which can produce a slick pavement condition. After application of the tack, time must be allowed for the tack to break. Breaking is the phenomenon when the asphalt and water in the emulsion separate, beginning the curing process (brown to black color). Traffic should be kept off the tacked area.

**Products** (Section 407.3.3) Asphalt emulsions commonly used for tack coats are diluted SS-1, SS-1h, SCC-1 and CSS-1h. Refer to Standard Specification Section 407 for additional information regarding tack coats.

Tack coat is incidental to asphalt paving.

\* Added for clarification

- 2.9.5. When performing Surface Milling operations, Contractor may encounter paving fabric (PetroMat, GlasPave, TruPave, etc.) that was installed as part of prior projects. No additional payment will be made due to such situation.
- 2.9.6 **Traffic Control** - The contractor will be responsible for traffic control for all projects performed under this contract. Traffic control shall be consistent with the MUTCD. Traffic control will be incidental to the work being done which requires traffic control.
- 2.9.7. Temporary asphalt transition ramps to accommodate traffic flow on surface and butt joint milled areas will be incidental those items.
- 2.10. **Warranty** - The contractor shall warranty both the labor and material for a period of one year from the date of application.
- 2.11. **Projects will be inspected by department personnel.**
- 2.12. **BIDDERS EXPERIENCE AND QUALIFICATIONS – The bidder must be approved to perform work under MoDot contracts.** The bidder shall include in the response, written documentation on their qualifications to perform the type of work described in this contract, and the equipment proposed for use on this project. Included shall be a summary of the bidders experience along with information and references regarding contracts, if any, which have been awarded the bidder by other agencies in the State of Missouri during the last 2 years. Government contract information is preferred, but private contract information is acceptable. This information will be included in the evaluation process in the form of Attachment A.
- 2.13. **SCHEDULING** – It is anticipated that the County will provide the Contractor a list of projects to be completed as part of this contract in March of 2013 with an anticipated date when each project will be finished being prepped by Boone County forces, and ready for the projects. The County will then give the Contractor a notice to proceed on each project when preparations are complete. The contractor will be required to complete all such projects prior to September 1, 2013, but will not be left with less than 60 calendar days to complete the projects. The contractor shall notify the County not less than 14 calendar days prior to the beginning of a particular project. In the event that the County requests additional work outside of the initial request noted above, the Contractor will be required to begin said additional work within 30 calendar days of said request.
- 2.14. **PREVAILING WAGE** - Not less than prevailing hourly rate of wages, as found by the Department of Labor and Industrial Relations of Missouri, shall be paid to all workers performing work under this contract. **Prevailing Wage Order Number 19** is attached. Wage Rate Certifications will be submitted for each employee for hours worked and upon completion of the project and prior to payment, contractor will be required to file with the County an affidavit stating that contractor has fully complied with the provisions and requirements of the Prevailing Wage Law.
- 2.15. **Insurance Requirements:** The Contractor shall not commence work under this contract until they have obtained all insurance required under this paragraph and such insurance has been approved by the County, nor shall the Contractor allow any subcontractor to commence work on their subcontract until all similar insurance required of subcontractor has been so obtained and approved. All policies

shall be in amounts, form and companies satisfactory to the County which must carry an A-6 or better rating as listed in the A.M. Best or equivalent rating guide. Insurance limits indicated below may be lowered at the discretion of the County.

- 2.15.1. **Compensation Insurance** - The Contractor shall take out and maintain during the life of this contract, **Employee's Liability and Worker's Compensation Insurance** for all of their employees employed at the site of work, and in case any work is sublet, the Contractor shall require the subcontractor similarly to provide Worker's Compensation Insurance for all of the latter's employees unless such employees are covered by the protection afforded by the Contractor. Worker's Compensation coverage shall meet Missouri statutory limits. Employers' Liability limits shall be \$1,000,000.00 each employee, \$1,000,000.00 each accident, and \$1,000,000.00 policy limit. In case any class of employees engaged in hazardous work under this Contract at the site of the work is not protected under the Worker's Compensation Statute, the Contractor shall provide and shall cause each subcontractor to provide Employers' Liability Insurance for the protection of their employees not otherwise protected.
- 2.15.2. **Comprehensive General Liability Insurance** - The Contractor shall take out and maintain during the life of this contract, such comprehensive general liability insurance as shall protect them and any subcontractor performing work covered by this contract, from claims for damages for personal injury including accidental death, as well as from claims for property damages, which may arise from operations under this contract, whether such operations be by themselves or for any subcontractor or by anyone directly or indirectly employed by them. The amounts of insurance shall be not less than \$2,000,000.00 combined single limit for any one occurrence covering both bodily injury and property damage, including accidental death. If the Contract involves any underground/digging operations, the general liability certificate shall include X, C, and U (Explosion, Collapse, and Underground) coverage. If providing Comprehensive General Liability Insurance, then the Proof of Coverage of Insurance shall also be included  
The Contractor has the option to provide **Owner's Contingent or Protective Liability and Property Damage** instead of the **Comprehensive General Liability Insurance**- The Contractor shall provide the County with proof of Owner's Protective Liability and Property Damage Insurance with the County as named insured, which shall protect the County against any and all claims which might arise as a result of the operations of the Contractor in fulfilling the terms of this contract during the life of the Contract. The minimum amounts of such insurance will be \$2,000,000.00 per occurrence, combined single limits. Limits can be satisfied by using a combination of primary and excess coverage. Should any work be subcontracted, these limits will also apply.
- 2.15.3. **COMMERCIAL Automobile Liability** – The Contractor shall maintain during the life of this contract, automobile liability insurance in the amount of not less than \$2,000,000.00 combined single limit for any one occurrence, covering both bodily injury, including accidental death, and property damage, to protect themselves from any and all claims arising from the use of the Contractor's own automobiles, teams and trucks; hired automobiles, teams and trucks; and both on and off the site of work.
- 2.15.4. **Proof of Carriage of Insurance** - The Contractor shall furnish the County with Certificate(s) of Insurance which name the County as additional insured in an amount as required in this contract, contain a description of the project or work to be performed, and requiring a thirty (30) day mandatory cancellation notice. In addition, such insurance shall be on occurrence basis and shall remain in effect until such time as the County has made final acceptance of the facility contracted.
- 2.16. **INDEMNITY AGREEMENT:** To the fullest extent permitted by law, Contractor shall indemnify, hold harmless and defend the County, its directors, agents, and employees from and against all claims arising by reason of any act or failure to act, negligent or otherwise, of Contractor, (meaning anyone, including but not limited to consultants having a contract with Contractor or subcontractor for part of the services), of anyone directly or indirectly employed by Contractor, or of anyone for whose acts the Contractor may be liable, in connection with providing these services. This provision does not, however, require Contractor to indemnify, hold harmless, or defend the County of Boone from its own negligence.
- 2.17. **SALES/USE TAX EXEMPTION** – County will provide the Contractor with a completed Missouri

Project Exemption and Missouri Tax Exemption letter for Boone County, Missouri and the Contractor shall be responsible for furnishing the exemption certificate and tax exemption letter to all authorized sub-contractors and suppliers providing materials incorporated in the work. All invoices issued for purchases for such materials, supplies and taxable rentals shall be in the name of Boone County and contain the project number assigned by Boone County for the contract awarded. It shall be the responsibility of the Contractor to insure that no sales or use taxes are included in the invoices and that the County pays no sales/use taxes from which it is exempt. The Contractor shall be responsible for obtaining revised exemption certificates and revised expiration dates if the work extends beyond the estimated project completion date or a certificate expiration date. The Contractor shall also be responsible for retaining a copy of the project exemption certificate for a period of five years and for compliance with all other terms and conditions of section 144.062 RSMo. Not otherwise herein specified. The Contractor agrees not to use or permit others to use the project exemption certificate for taxable purchases of materials or rentals and supplies not directly incorporated into or used in the work to which it applies and agrees to indemnify and hold the County harmless from all losses, expenses and costs including litigation expenses and attorney fees resulting from the unauthorized use of such project exemption certificates.

- 2.18. **LIEN WAIVERS** - Prior to the release of contract amount, contractor shall file with the County, an affidavit, to the effect that all payments have been made and all claims have been released for all materials, labor and other items covered by the contract;
- 2.19. **BILLING AND PAYMENTS** – Invoices shall be submitted to the Boone County Resource Management – Engineering Division at the following address: Boone County Government Center, 801 East Walnut, Room 315 Columbia, MO 65201. Payment shall be made within 30 days of receipt of a correct invoice.
- 2.20. **DESIGNEE** – Boone County Resource Management – Engineering Division
- 2.21. **Overhead Line Protection: The Contractor is aware of the provisions of the Overhead Power Line Safety Act, 319.075 to 319.090 RSMo, and agrees to comply with the provisions thereof. Contractor understands that it is their duty to notify any utility operating high voltage overhead lines and make appropriate arrangements with said utility if the performance of contract would cause any activity within ten feet of any high voltage overhead line.** To the fullest extent permitted by law, Contractor shall indemnify, hold harmless and defend the County, its directors, officers, agents, and employees from and against all claims, damages, losses and expenses (including but not limited to attorney’s fees) arising by reason of any act or failure to act, negligent or otherwise, of Contractor, of any subcontractor (meaning anyone, including but not limited to consultants having a contract with contractor or a subcontract for part of the services), of anyone directly or indirectly employed by contractor or by any subcontractor, or of anyone for whose acts the contractor or its subcontractor may be liable, in connection with any claims arising under the Overhead Power Line Safety Act. Contractor expressly waives any action for Contribution against the County on behalf of the Contractor, any subcontractor (meaning anyone, including but not limited to consultants having a contract with contractor or a subcontract for part of the services), anyone directly or indirectly employed by contractor or by any subcontractor, or of anyone for whose acts the contractor or its subcontractor may be liable, and agrees to provide a copy of this waiver to any party affected by this provision.
- 2.22. **OSHA Program Requirements** – The Contractor is familiar with the requirements of 292.675 RSMo. The Contractor shall provide a ten-hour Occupational Safety and Health Administration (OSHA) construction safety program for their on-site employees, subcontractors or others acting on behalf of Contractor on-site which meets the requirements of 292.675 RSMo.
- 2.23. The Contractor and each subcontractor shall keep accurate records of those employees who are working on-site and a record of each such employee’s completion of the OSHA program, **and certify compliance by affidavit at the conclusion of the project.**

2.24. The Contractor shall forfeit as a penalty to the County the sum of Two Thousand Five Hundred Dollars (\$2,500.00) plus One Hundred Dollars (\$100.00) for each employee employed by the Contractor or subcontractor, for each calendar day, or portion thereof, such employee is found to be employed in violation of 292.675 RSMo. Said amounts shall be withheld from all sums and amounts due under this provision when making payments to the Contractor.

2.25. **Employment of Unauthorized Aliens Prohibited**

- (a) Contractor agrees to comply with Missouri State Statute section 285.530 in that they shall not knowingly employ, hire for employment, or continue to employ an unauthorized alien to perform work within the state of Missouri.
- (b) As a condition for the award of this contract, the Contractor shall, by sworn affidavit and provision of documentation, affirm its enrollment and participation in a federal work authorization program with respect to the employees working in connection with the contracted services. The contractor shall also sign an affidavit affirming that it does not knowingly employ any person who is an unauthorized alien in connection with the contracted services. **Please return a copy of the Memorandum of Understanding** that you will receive following completion of enrollment. This will provide the County the proof of enrollment.
- (c) Contractor shall require each subcontractor to affirmatively state in its contract with Contractor that the subcontractor shall not knowingly employ, hire for employment or continue to employ an unauthorized alien to perform work within the state of Missouri. Contractor shall also require each subcontractor to provide Contractor with a sworn affidavit under the penalty of perjury attesting to the fact that the subcontractor's employees are lawfully present in the United States.

**3. Response Presentation and Review**

- 3.1. **RESPONSE CONTENT** - In order to enable direct comparison of competing Responses, you must submit your Response in strict conformity to the requirements stated here. Failure to adhere to all requirements may result in your Response being disqualified as non-responsive. All Responses must be submitted using the provided Response Sheet. Every question must be answered and if not applicable, the section must contain “N/A” or “No Bid”. Manufacturer’s published specifications for the items requested shall be included with the response.
- 3.2. **SUBMITTAL OF RESPONSES** - Responses MUST be received by the date and time noted on the title page under “Bid Submission Information and Deadline”. NO EXCEPTIONS. We are not responsible for late or incorrect deliveries from the US Postal Service or any other mail carrier.
- 3.2.1. **Submittal Package** - Submit, to the location specified on the title page, **three (3) complete copies** of your Response in a single sealed envelope, clearly marked on the outside with your company name and return address, the proposal number and the due date and time.
- 3.2.2. **Advice of Award** - A Bid Tabulation of responses received as well as Award status can be viewed at [www.showmeboone.com](http://www.showmeboone.com).
- 3.3. **BID OPENING** - On the date and time and at the location specified on the title page under “Bid Opening”, all Responses will be opened in public. Brief summary information from each will be read aloud.
- 3.3.1. **Removal from Vendor Database** - If any prospective Bidder currently in our Vendor Database to whom the Bid was sent elects not to submit a Response and fails to reply in writing stating reasons for not bidding, that Bidder’s name may be removed from our database. Other reasons for removal include unwillingness or inability to show financial responsibility, reported poor performance, unsatisfactory service, or repeated inability to meet delivery requirements.
- 3.4. **RESPONSE CLARIFICATION** - We reserve the right to request additional written or oral information from Bidders in order to obtain clarification of their Responses.
- 3.4.1. **Rejection or Correction of Responses** - We reserve the right to reject any or all Responses. Minor irregularities or informalities in any Response which are immaterial or inconsequential in nature, and are neither affected by law nor at substantial variance with Bid conditions, may be waived at our discretion whenever it is determined to be in the County’s best interest.
- 3.5. **EVALUATION PROCESS** - Our sole purpose in the evaluation process is to determine from among the Responses received which one is best suited to meet the County’s needs at the lowest possible cost. Any final analysis or weighted point score does not imply that one Bidder is superior to another, but simply that in our judgment the Contractor selected appears to offer the best overall solution for our current and anticipated needs at the lowest possible cost.
- 3.5.1. **Method of Evaluation** – The County will evaluate on qualifications and will use the quantities in Section 2.2.1, or current anticipated work list, to evaluate pricing of major bid items.
- 3.5.2. **Acceptability** - We reserve the sole right to determine whether goods and/or services offered are acceptable for our use. We also reserve the right to request samples of any and/or all equivalent products bid in order to ensure comparative quality between those items and the name brand items specified on Attachment A.
- 3.5.3. In the event of a discrepancy between a unit price and an extended line item price, the unit price shall govern.
- 3.5.4. **Endurance of Pricing** - Your pricing must be held until contract execution or 60 days, whichever comes first.

4. Response Form

4.1. Company Name:

\_\_\_\_\_

4.2. Address:

\_\_\_\_\_

4.3. City/Zip:

\_\_\_\_\_

4.4. Phone Number:

\_\_\_\_\_

4.5. Fax Number:

\_\_\_\_\_

4.6. Federal Tax ID:

\_\_\_\_\_

4.6.1. ( ) Corporation

( ) Partnership - Name \_\_\_\_\_

( ) Individual/Proprietorship - Individual Name \_\_\_\_\_

( ) Other (Specify) \_\_\_\_\_

4.7. PRICING

Unit Price

4.7.1. Asphalt Overlay, BP-2, Virgin	\$ _____	/Ton
4.7.2. Asphalt Overlay, BP-2, R.A.P.	\$ _____	/Ton
4.7.3. Surface Milling, Asphalt, Contractor Haul-off	\$ _____	/S.Y.
4.7.4. Surface Milling, Asphalt, County Haul-off	\$ _____	/S.Y.
4.7.5. Surface Milling, Concrete, Contractor Haul-off	\$ _____	/S.Y.
4.7.6. Surface Milling, Concrete, County Haul-off	\$ _____	/S.Y.
4.7.7. Surface Milling, Butt-Joint	\$ _____	/S.Y.
4.7.8. Dig Out Repair, Asphalt, Typical	\$ _____	/S.Y.
4.7.9. Dig Out Repair, Asphalt, Hasty	\$ _____	/Hr.
4.7.10. Dig Out Repair, Concrete, Hasty	\$ _____	/Hr.
4.7.11. Rock Driveway Transitions	\$ _____	/Ton
4.7.12. Temporary Centerline Markers	\$ _____	/E.A.
4.7.13. Restoration	\$ _____	/S.F.
4.7.14. Additional Work	\$ _____	/Hr.

4.8. The undersigned offers to furnish and deliver the articles or services as specified at the prices and terms stated and in strict accordance with the specifications, instructions and general conditions of bidding which have been read and understood, and all of which are made part of this order.

4.8.1. Authorized Representative (Sign By Hand):

\_\_\_\_\_

4.8.2. Type or Print Signed Name:

\_\_\_\_\_

4.8.3. Today's Date: \_\_\_\_\_

4.9. Will you honor the submitted prices for purchase by other entities in Boone County who participate in cooperative purchasing with Boone County, Missouri? \_\_\_\_\_ Yes \_\_\_\_\_ No

**ATTACHMENT A**  
**STATEMENT OF BIDDER'S QUALIFICATIONS**

(File with Bid Form)

1. Number of years in business: \_\_\_\_\_ If not under present firm name, list previous firm names and types of organizations.

---

---

---

2. Previous Work: (Complete the following schedule)

Item	Purchaser	Amount of Contract	Percent Completed
------	-----------	--------------------	-------------------

---

---

---

3. General type of work performed:

---

4. There has been no default in any contract completed or un-completed except as noted below:

(a) Number of contracts on which default was made: \_\_\_\_\_

(b) Description of defaulted contracts and reason therefore:

---

---

5. List references:

---

---

---

Dated at \_\_\_\_\_

this \_\_\_\_\_ day of \_\_\_\_\_, 20 \_\_\_\_\_.

\_\_\_\_\_  
Name of Organization(s)

By \_\_\_\_\_  
(Signature)

\_\_\_\_\_  
(Title of person signing)



**(Please complete and return with Contract)**

Certification Regarding  
Debarment, Suspension, Ineligibility and Voluntary Exclusion  
Lower Tier Covered Transactions

This certification is required by the regulations implementing Executive Order 12549, Debarment and Suspension, 29 CFR Part 98 Section 98.510, Participants' responsibilities. The regulations were published as Part VII of the May 26, 1988, Federal Register (pages 19160-19211).

(BEFORE COMPLETING CERTIFICATION, READ INSTRUCTIONS FOR CERTIFICATION)

- (1) The prospective recipient of Federal assistance funds certifies, by submission of this proposal, that neither it nor its principals are presently debarred, suspended, proposed for debarment, declared ineligible, or voluntarily excluded from participation in this transaction by any Federal department or agency.
- (2) Where the prospective recipient of Federal assistance funds is unable to certify to any of the statements in this certification, such prospective participant shall attach an explanation to this proposal.

---

Name and Title of Authorized Representative

---

Signature

---

Date



## Standard Terms and Conditions

**Boone County Purchasing**  
613 E. Ash Street, Room 109  
Columbia, MO 65101

**Amy Robbins, Senior Buyer**

Phone: (573) 886-4392 – Fax: (573) 886-4390

---

1. Responses shall include all charges for packing, delivery, installation, etc., (unless otherwise specified) to the Boone County Department identified in the Request for Bid and/or Proposal.
2. The Boone County Commission has the right to accept or reject any part or parts of all bids, to waive technicalities, and to accept the offer the County Commission considers the most advantageous to the County. Boone County reserves the right to award this bid on an item-by-item basis, or an “all or none” basis, whichever is in the best interest of the County.
3. Bidders must use the bid forms provided for the purpose of submitting bids, must return the bid and bid sheets comprised in this bid, give the unit price, extended totals, and sign the bid.
4. When products or materials of any particular producer or manufacturer are mentioned in our specifications, such products or materials are intended to be descriptive of type or quality and not restricted to those mentioned.
5. Do not include Federal Excise Tax or Sales and Use Taxes in bid process, as law exempts the County from them.
6. The delivery date shall be stated in definite terms, as it will be taken into consideration in awarding the bid.
7. The County Commission reserves the right to cancel all or any part of orders if delivery is not made or work is not started as guaranteed. In case of delay, the Contractor must notify the office of Resource Management, Design and Construction Division.
8. In case of default by the Contractor, the County of Boone will procure the articles or services from other sources and hold the Bidder responsible for any excess cost occasioned thereby.
9. Failure to deliver as guaranteed may disqualify Bidder from future bidding.
10. Prices must be as stated in units of quantity specified, and must be firm. Bids qualified by escalator clauses may not be considered unless specified in the bid specifications.
11. No bid transmitted by fax machine or **e-mail** will be accepted. **U.S. mail only.**
12. The County of Boone, Missouri expressly denies responsibility for, or ownership of any item purchased until same is delivered to the County and is accepted by the County.
13. The County reserves the right to award to one or multiple respondents. The County also reserves the right to not award any item or group of items if the services can be obtained from a state or other governmental entities contract under more favorable terms.

14. The County, from time to time, uses federal grant funds for the procurement of goods and services. Accordingly, the provider of goods and/or services shall comply with federal laws, rules and regulations applicable to the funds used by the County for said procurement, and contract clauses required by the federal government in such circumstances are incorporated herein by reference. These clauses can generally be found in the Federal Transit Administration's Best Practices Procurement Manual – Appendix A. Any questions regarding the applicability of federal clauses to a particular bid should be directed to the Purchasing Department prior to bid opening.
15. In the event of a discrepancy between a unit price and an extended line item price, the unit price shall govern.
16. Should an audit of Contractor's invoices during the term of the Agreement, and any renewals thereof, indicate that the County has remitted payment on invoices that constitute an over-charging to the County above the pricing terms agreed to herein, the Contractor shall issue a refund check to the County for any over-charges within 30-days of being notified of the same.

# Missouri

## Division of Labor Standards

WAGE AND HOUR SECTION



JEREMIAH W. (JAY) NIXON, Governor

## Annual Wage Order No. 19

Section 010

**BOONE COUNTY**

In accordance with Section 290.262 RSMo 2000, within thirty (30) days after a certified copy of this Annual Wage Order has been filed with the Secretary of State as indicated below, any person who may be affected by this Annual Wage Order may object by filing an objection in triplicate with the Labor and Industrial Relations Commission, P.O. Box 599, Jefferson City, MO 65102-0599. Such objections must set forth in writing the specific grounds of objection. Each objection shall certify that a copy has been furnished to the Division of Labor Standards, P.O. Box 449, Jefferson City, MO 65102-0449 pursuant to 8 CSR 20-5.010(1). A certified copy of the Annual Wage Order has been filed with the Secretary of State of Missouri.

Original Signed by

Carla Buschjost, Director  
Division of Labor Standards

This Is A True And Accurate Copy Which Was Filed With The Secretary of State: March 9, 2012

Last Date Objections May Be Filed: April 9, 2012

Prepared by Missouri Department of Labor and Industrial Relations

OCCUPATIONAL TITLE	** Date of Increase	*	Basic Hourly Rates	Over-Time Schedule	Holiday Schedule	Total Fringe Benefits
Asbestos Worker (H & F) Insulator			\$30.76	55	60	\$18.81
Boilermaker			\$32.31	57	7	\$25.80
Bricklayer and Stone Mason	7/12		\$28.20	59	7	\$14.83
Carpenter	7/12		\$24.09	60	15	\$13.65
Cement Mason	7/12		\$25.73	9	3	\$10.70
Electrician (Inside Wireman)			\$30.42	28	7	\$12.18 + 13%
Electrician (Outside-Line Construction\Lineman)	9/12		\$38.91	43	45	\$5.00 + 37.5%
Lineman Operator	9/12		\$33.59	43	45	\$5.00 + 37.5%
Groundman	9/12		\$25.97	43	45	\$5.00 + 37.5%
Communication Technician			\$30.42	28	7	\$12.18 + 13%
Elevator Constructor		a	\$42.195	26	54	\$23.305
Operating Engineer						
Group I	8/12		\$26.16	86	66	\$22.60
Group II	8/12		\$26.16	86	66	\$22.60
Group III	8/12		\$24.91	86	66	\$22.60
Group III-A	8/12		\$26.16	86	66	\$22.60
Group IV	8/12		\$23.93	86	66	\$22.60
Group V	8/12		\$26.86	86	66	\$22.60
Pipe Fitter	8/12	b	\$34.25	91	69	\$25.03
Glazier		c	\$27.35	122	76	\$14.22 + 5.2%
Laborer (Building):						
General			\$20.81	42	44	\$11.54
First Semi-Skilled			\$22.81	42	44	\$11.54
Second Semi-Skilled			\$21.81	42	44	\$11.54
Lather			USE CARPENTER RATE			
Linoleum Layer and Cutter			USE CARPENTER RATE			
Marble Mason			\$20.62	124	74	\$12.68
Millwright	7/12		\$25.09	60	15	\$13.65
Ironworker	8/12		\$27.81	11	8	\$21.04
Painter	7/12		\$21.95	18	7	\$11.42
Plasterer	7/12		\$24.54	94	5	\$12.39
Plumber	8/12	b	\$34.25	91	69	\$25.03
Pile Driver	7/12		\$25.09	60	15	\$13.65
Roofer \ Waterproofer			\$28.05	12	4	\$12.99
Sheet Metal Worker	7/12		\$29.35	40	23	\$14.64
Sprinkler Fitter - Fire Protection			\$30.52	33	19	\$17.02
Terrazzo Worker			\$27.48	124	74	\$14.32
Tile Setter			\$20.62	124	74	\$12.68
Truck Driver-Teamster						
Group I			\$24.50	101	5	\$9.30
Group II			\$25.15	101	5	\$9.30
Group III			\$24.65	101	5	\$9.30
Group IV			\$25.15	101	5	\$9.30
Traffic Control Service Driver			\$26.415	22	55	\$9.045

Fringe Benefit Percentage is of the Basic Hourly Rate

Attention Workers: If you are not being paid the appropriate wage rate and fringe benefits contact the Division of Labor Standards at (573) 751-3403.

\*\*Annual Incremental Increase



**BOONE COUNTY  
OVERTIME SCHEDULE - BUILDING CONSTRUCTION**

**FED:** Minimum requirement per Fair Labor Standards Act means time and one-half (1 ½) shall be paid for all work in excess of forty (40) hours per work week.

**NO. 9:** Means the regular workday starting time of 8:00 a.m. (and resulting quitting time of 4:30 p.m.) may be moved forward to 6:00 a.m. or delayed one hour to 9:00 a.m. All work performed in excess of the regular work day and on Saturday shall be compensated at one and one-half (1½) times the regular pay. In the event time is lost during the work week due to weather conditions, the Employer may schedule work on the following Saturday at straight time. All work accomplished on Sunday and holidays shall be compensated for at double the regular rate of wages. The work week shall be Monday through Friday, except for midweek holidays.

**NO. 11:** Means eight (8) hours shall constitute a day's work, with the starting time to be established between 6:00 a.m. and 8:00 a.m. from Monday to Friday. Time and one-half (1½) shall be paid for first two (2) hours of overtime Monday through Friday and the first eight (8) hours on Saturday. All other overtime hours Monday through Saturday shall be paid at double (2) time rate. Double (2) time shall be paid for all time on Sunday and recognized holidays or the days observed in lieu of these holidays.

**NO. 12:** Means the work week shall commence on Monday at 12:01 a.m. and shall continue through the following Friday, inclusive of each week. All work performed by employees anywhere in excess of forty (40) hours in one (1) work week, shall be paid for at the rate of one and one-half (1½) times the regular hourly wage scale. All work performed within the regular working hours which shall consist of a ten (10) hour work day except in emergency situations. Overtime work and Saturday work shall be paid at one and one-half (1½) times the regular hourly rate. Work on recognized holidays and Sundays shall be paid at two (2) times the regular hourly rate.

**NO. 18:** Means the regular work day shall be eight (8) hours. Working hours are from six (6) hours before Noon (12:00) to six (6) hours after Noon (12:00). The regular work week shall be forty (40) hours, beginning between 6:00 a.m. and 12:00 Noon on Monday and ending between 1:00 p.m. and 6:00 p.m. on Friday. Saturday will be paid at time and one-half (1½). Sunday and Holidays shall be paid at double (2) time. Saturday can be a make-up day if the weather has forced a day off, but only in the week of the day being lost. Any time before six (6) hours before Noon or six (6) hours after Noon will be paid at time and one-half (1½).

**NO. 22:** Means a regular work week of forty (40) hours will start on Monday and end on Friday. The regular work day shall be either eight (8) or ten (10) hours. If a crew is prevented from working forty (40) hours Monday through Friday, or any part thereof by reason of inclement weather, Saturday or any part thereof may be worked as a make-up day at the straight time rate. Employees who are part of a regular crew on a make-up day, notwithstanding the fact that they may not have been employed the entire week, shall work Saturday at the straight time rate. A workday is to begin between 6:00 a.m. and 9:00 a.m. However, the project starting time may be advanced or delayed if mutually agreed to by the interest parties. For all time worked on recognized holidays, or days observed as such, double (2) time shall be paid.

**NO. 26:** Means that the regular working day shall consist of eight (8) hours worked between 6:00 a.m., and 5:00 p.m., five (5) days per week, Monday to Friday, inclusive. Hours of work at each jobsite shall be those established by the general contractor and worked by the majority of trades. (The above working hours may be changed by mutual agreement). Work performed on Construction Work on Saturdays, Sundays and before and after the regular working day on Monday to Friday, inclusive, shall be classified as overtime, and paid for at double (2) the rate of single time. The employer may establish hours worked on a jobsite for a four (4) ten (10) hour day work week at straight time pay for construction work; the regular working day shall consist of ten (10) hours worked consecutively, between 6:00 a.m. and 6:00 p.m., four (4) days per week, Monday to Thursday, inclusive. Any work performed on Friday, Saturday, Sunday and holidays, and before and after the regular working day on Monday to Thursday where a four (4) ten (10) hour day workweek has been established, will be paid at two times (2) the single time rate of pay. The rate of pay for all work performed on holidays shall be at two times (2) the single time rate of pay.

**BOONE COUNTY  
OVERTIME SCHEDULE - BUILDING CONSTRUCTION**

**NO. 28:** Means a regular workday shall consist of eight (8) hours between 7:00 a.m. and 5:30 p.m., with at least a thirty (30) minute period to be taken for lunch. Five (5) days a week, Monday through Friday inclusive, shall constitute a work week. The Employer has the option for a workday/workweek of four (4) ten (10) hour days (4-10's) provided:

- The project must be for a minimum of four (4) consecutive days.
- Starting time may be within one (1) hour either side of 8:00 a.m.
- Work week must begin on either a Monday or Tuesday: If a holiday falls within that week it shall be a consecutive work day. (Alternate: If a holiday falls in the middle of a week, then the regular eight (8) hour schedule may be implemented).
- Any time worked in excess of any ten (10) hour work day (in a 4-10 hour work week) shall be at the appropriate overtime rate.

All work outside of the regular working hours as provided, Monday through Saturday, shall be paid at one & one-half (1½) times the employee's regular rate of pay. All work performed from 12:00 a.m. Sunday through 8:00 a.m. Monday and recognized holidays shall be paid at double (2) the straight time hourly rate of pay. Should employees work in excess of twelve (12) consecutive hours they shall be paid double time (2X) for all time after twelve (12) hours. Shift work performed between the hours of 4:30 p.m. and 12:30 a.m. (second shift) shall receive eight (8) hours pay at the regular hourly rate of pay plus ten (10%) percent for seven and one-half (7½) hours work. Shift work performed between the hours of 12:30 a.m. and 8:00 a.m. (third shift) shall receive eight (8) hours pay at the regular hourly rate of pay plus fifteen (15%) percent for seven (7) hours work. A lunch period of thirty (30) minutes shall be allowed on each shift. All overtime work required after the completion of a regular shift shall be paid at one and one-half (1½) times the shift hourly rate.

**NO. 33:** Means the standard work day and week shall be eight (8) consecutive hours of work between the hours of 6:00 a.m. and 6:00 p.m., excluding the lunch period Monday through Friday, or shall conform to the practice on the job site. Four (4) days at ten (10) hours a day may be worked at straight time, Monday through Friday and need not be consecutive. All overtime, except for Sundays and holidays shall be at the rate of time and one-half (1½). Overtime worked on Sundays and holidays shall be at double (2) time.

**NO. 40:** Means the regular working week shall consist of five (5) consecutive (8) hour days' labor on the job beginning with Monday and ending with Friday of each week. Four (4) 10-hour days may constitute the regular work week. The regular working day shall consist of eight (8) hours labor on the job beginning as early as 7:00 a.m. and ending as late as 5:30 p.m. All full or part time labor performed during such hours shall be recognized as regular working hours and paid for at the regular hourly rate. All hours worked on Saturday and all hours worked in excess of eight (8) hours but not more than twelve (12) hours during the regular working week shall be paid for at time and one-half (1½) the regular hourly rate. All hours worked on Sundays and holidays and all hours worked in excess of twelve (12) hours during the regular working day shall be paid at two (2) times the regular hourly rate. In the event of rain, snow, cold or excessively windy weather on a regular working day, Saturday may be designated as a "make-up" day. Saturday may also be designated as a "make-up" day, for an employee who has missed a day of work for personal or other reasons. Pay for "make-up" days shall be at regular rates.



**BOONE COUNTY  
OVERTIME SCHEDULE - BUILDING CONSTRUCTION**

**NO. 42:** Means eight (8) hours between the hours of 8:00 a.m. and 4:30 p.m. shall constitute a work day. The starting time may be advanced one (1) or two (2) hours. Employees shall have a lunch period of thirty (30) minutes. The Employer may provide a lunch period of one (1) hour, and in that event, the workday shall commence at 8:00 a.m. and end at 5:00 p.m. The workweek shall commence at 8:00 a.m. on Monday and shall end at 4:30 p.m. on Friday (or 5:00 p.m. on Friday if the Employer grants a lunch period of one (1) hour), or as adjusted by starting time change as stated above. All work performed before 8:00 a.m. and after 4:30 p.m. (or 5:00 p.m. where one (1) hour lunch is granted for lunch) or as adjusted by starting time change as stated above or on Saturday, except as herein provided, shall be compensated at one and one-half (1½) times the regular hourly rate of pay for the work performed. All work performed on Sunday and on recognized holidays shall be compensated at double (2) the regular hourly rate of pay for the work performed. When working a five 8-hour day schedule and an Employer is prevented from working forty (40) hours, Monday through Friday, or any part thereof by reason of inclement weather (rain or mud), Saturday or any part thereof may be worked as a make-up day at the straight time rate. The Employer shall have the option of working five eight (8) hour days or four ten (10) hour days Monday through Friday. If an Employer elects to work five (5) eight (8) hour days during any work week, hours worked more than eight (8) per day or forty (40) hours per week shall be paid at time and one-half (1½) the hourly rate Monday through Friday. If an Employer elects to work four (4) ten (10) hour days in any week, work performed more than ten (10) hours per day or forty (40) hours per week shall be paid at time and one-half (1½) the hourly rate Monday through Friday. If an Employer is working ten (10) hour days and loses a day due to inclement weather, they may work ten (10) hours Friday at straight time. All hours worked over the forty (40) hours Monday through Friday will be paid at time and one-half (1½) overtime rate. Overtime shall be computed at half-hour intervals. Shift Work: Two (2) or three (3) shifts shall be permitted, provided such shifts are scheduled for a minimum of three (3) consecutive days. The second shift shall begin at 4:30 p.m. and end at 12:30 a.m. with one-half (1/2) hour for lunch between 7:30 p.m. and 9:00 p.m. and shall received eighty (8) hours' pay. The third shift shall begin at 12:30 a.m. and end at 8:00 a.m. with one-half (1/2) hour for lunch between 3:30 a.m. and 5:00 a.m. and shall received (8) hour's; pay. There shall be at least one (1) foreman on each shift on jobs where more than one shift is employed, provided that there are two (2) or more employees on second and on the third shifts. All shifts shall arrange to interchange working hours at the end of each week. When three shifts are used, the applicable rate must be paid from Saturday at 8:00 a.m. until the following Monday at 8:00 a.m. When three shifts are employed, the second and third shifts shall contain at least one-half (1/2) as many employees as the first shift.

**NO. 43:** Eight (8) hours shall constitute a work day between the hours of 7:00 a.m. and 4:30 p.m. Forty (40) hours within five (5) days, Monday through Friday inclusive, shall constitute the work week. Work performed in the 9th and 10th hour, Monday through Friday, shall be paid at time and one-half (1½) the regular straight time rate of pay. Contractor has the option to pay two (2) hours per day at the time and one-half (1½) the regular straight time rate of pay between the hours of 6:00 a.m. and 5:30 p.m., Monday through Friday. Work performed outside the regularly scheduled working hours and on Saturdays, Sundays and recognized legal holidays, or days celebrated as such, shall be paid for at the rate of double (2) time.

**NO. 55:** Means the regular work day shall be eight (8) hours between 6:00 a.m. and 4:30 p.m. The first two (2) hours of work performed in excess of the eight (8) hour work day, Monday through Friday, and the first ten (10) hours of work on Saturday, shall be paid at one & one-half (1½) times the straight time rate. All work performed on Sunday, observed holidays and in excess of ten (10) hours a day, Monday through Saturday, shall be paid at double (2) the straight time rate.

**NO. 57:** Means eight (8) hours per day shall constitute a day's work and forty (40) hours per week, Monday through Friday, shall constitute a week's work. The regular starting time shall be 8:00 a.m. If a second or third shift is used, the regular starting time of the second shift shall be 4:30 p.m. and the regular starting period for the third shift shall be 12:30 a.m. These times may be adjusted by the employer. The day shift shall work a regular eight (8) hours shift as outlined above. Employees working a second shift shall receive an additional \$0.25 above the regular hourly rate and perform seven and one-half (7½) hours work for eight (8) hours pay. Third shift employees shall be paid an additional \$0.50 above the regular hourly rate and work seven (7) hours for eight (8) hours pay. When circumstances warrant, the Employer may change the regular workweek to four (4) ten-hour days at the regular time rate of pay. All time worked before and after the established workday of eight (8) hours, Monday through Friday, and all time worked on Saturday shall be paid at the rate of time and one-half (1½) except in cases where work is part of an employee's regular Friday shift. All time worked on Sunday and recognized holidays shall be paid at the double (2) time rate of pay except in cases where work is part of an employee's previous day's shift. For all overtime hours worked \$25.77 of the fringe benefits portion of the prevailing wage shall be paid at the same overtime rate at which the cash portion of the prevailing wage is to be paid. The remaining \$1.24 of the fringe benefit portion of the prevailing wage may be paid at straight time.

**BOONE COUNTY  
OVERTIME SCHEDULE - BUILDING CONSTRUCTION**

**NO. 59:** Means that except as herein provided, eight (8) hours a day shall constitute a standard work day, and forty (40) hours per week shall constitute a week's work. All time worked outside of the standard eight (8) hour work day and on Saturday shall be classified as overtime and paid the rate of time and one-half (1½). All time worked on Sunday and holidays shall be classified as overtime and paid at the rate of double (2) time. The Employer has the option of working either five (5) eight hour days or four (4) ten hour days to constitute a normal forty (40) hour work week. When the four (4) ten-hour work week is in effect, the standard work day shall be consecutive ten (10) hour periods between the hours of 6:30 a.m. and 6:30 p.m. Forty (40) hours per week shall constitute a weeks work, Monday through Thursday, inclusive. In the event the job is down for any reason beyond the Employer's control, then Friday and/or Saturday may, at the option of the Employer, be worked as a make-up day; straight time not to exceed ten (10) hours or forty (40) hours per week. When the five day eight (8) hour work week is in effect, forty (40) hours per week shall constitute a week's work, Monday through Friday, inclusive. In the event the job is down for any reason beyond the Employer's control, then Saturday may, at the option of the Employer, be worked as a make-up day; straight time not to exceed eight (8) hours or forty (40) hours per week. The regular starting time (and resulting quitting time) may be moved to 6:00 a.m. or delayed to 9:00 a.m. Make-up days shall not be utilized for days lost due to holidays.

**NO. 60:** Means the Employer shall have the option of working five 8-hour days or four 10-hour days Monday through Friday. If an Employer elects to work five 8-hour days during any work week, hours worked more than eight (8) per day or forty (40) per week shall be paid at time and one-half (1½) the hourly wage rate plus fringe benefits Monday through Friday. **SATURDAY MAKE-UP DAY:** If an Employer is prevented from working forty (40) hours, Monday through Friday, or any part thereof by reason of inclement weather (rain or mud), Saturday or any part thereof may be worked as a make-up day at the straight time rate. It is agreed by the parties that the make-up day is not to be used to make up time lost due to recognized holidays. If an Employer elects to work four 10-hour days, between the hours of 6:30 a.m. and 6:30 p.m. in any week, work performed more than ten (10) hours per day or forty (40) hours per week shall be paid at time and one half (1½) the hourly wage rate plus fringe benefits Monday through Friday. If an Employer is working 10-hour days and loses a day due to inclement weather, the Employer may work ten (10) hours on Friday at straight time. All hours worked over the forty (40) hours Monday through Friday will be paid at time and one-half (1½) the hourly wage rate plus fringe benefits. All Millwright work performed in excess of the regular work day and on Saturday shall be compensated for at time and one-half (1½) the regular Millwright hourly wage rate plus fringe benefits. The regular work day starting at 8:00 a.m. (and resulting quitting time of 4:30 p.m.) may be moved forward to 6:00 a.m. or delayed one (1) hour to 9:00 a.m. All work accomplished on Sundays and recognized holidays, or days observed as recognized holidays, shall be compensated for at double (2) the regular hourly rate of wages plus fringe benefits. NOTE: All overtime is computed on the hourly wage rate plus an amount equal to the fringe benefits.

**NO. 86:** Means the regular work week shall consist of five (5) days, Monday through Friday, beginning at 8:00 a.m. and ending at 4:30 p.m. The regular work day beginning time may be advanced one or two hours or delayed by one hour. However, the Employer may have the option to schedule his work week from Monday through Thursday at ten (10) hours per day at the straight time rate of pay with all hours in excess of ten (10) hours in any one day to be at the applicable overtime rate. If the Employer elects to work from Monday through Thursday and is stopped due to circumstances beyond his control, inclement weather or holiday, he shall have the option to work Friday at the straight time rate of pay to complete his forty (40) hours. If an employee declines to work Friday as a make-up day, he shall not be penalized. All overtime work performed on Monday through Saturday shall be paid at time and one-half (1½) of the hourly rate plus an amount equal to one-half (½) of the hourly Total Indicated Fringe Benefits. All work performed on Sundays and recognized holidays shall be paid at double (2) the hourly rate plus an amount equal to the hourly Total Indicated Fringe Benefits.

**BOONE COUNTY  
OVERTIME SCHEDULE - BUILDING CONSTRUCTION**

**NO. 91:** Means eight (8) hours shall constitute a day's work commencing at 7:00 a.m. and ending at 3:30 p.m., allowing one-half (½) hour for lunch. The option exists for the Employer to use a flexible starting time between the hours of 6:00 a.m. and 9:00 a.m. The regular workweek shall consist of forty (40) hours of five (5) workdays, Monday through Friday. The workweek may consist of four (4) ten (10) hour days from Monday through Thursday, with Friday as a make-up day. If the make-up day is a holiday, the employee shall be paid at the double (2) time rate. The employees shall be paid time and one-half (1½) for work performed on Saturdays, before the regular starting time or after the regular quitting time or over eight (8) hours per work day (unless working a 10-hour work day, then time and one-half (1½) is paid for work performed over ten (10) hours a day) or over forty (40) hours per work week. Work performed on Sundays and recognized holidays shall be paid at the double (2) time rate of pay. **SHIFT WORK:** When it is necessary for the project to operate in shifts, there will be three (3) eight (8) hour shifts commencing at 8:00 a.m. Shift work must continue for a period of not less than three (3) consecutive work days, two (2) days which must be regular work days (Monday through Friday). In the event the second or third shift of any regular work day shall fall into a Saturday or a holiday, such extension into a Saturday or holiday shall be considered as part of the previous workday and employees shall be paid at the regular shift rate. The first day shift shall work a regular eight (8) hour day at regular rates. The second shift shall be eight (8) hours regular time pay plus \$2.50 per hour premium for eight (8) hours work. Third shift will be for eight (8) hours regular time pay plus \$3.00 per hour premium for eight (8) hours work.

**NO. 94:** Means eight (8) hours shall constitute a day's work between the hours of 8:00 a.m. and 5:00 p.m. The regular workday starting time of 8:00 a.m. (and resulting quitting time of 4:30 p.m.) may be moved forward to 6:00 a.m. or delayed one (1) hour to 9:00 a.m. All work performed in excess of the regular work day and on Saturday shall be compensated at one and one-half (1½) times the regular pay. In the event time is lost during the work week due to weather conditions, the Employer may schedule work on the following Saturday at straight time. All work accomplished on Sunday and holidays shall be compensated at double the regular rate of wages.

**NO. 101:** Means that except as provided below, eight (8) hours a day shall constitute a standard work day, and forty (40) hours per week shall constitute a week's work, which shall begin on Monday and end on Friday. All time worked outside of the standard work day and on Saturday shall be classified as overtime and paid the rate of time and one-half (1½) (except as herein provided). All time worked on Sunday and recognized holidays shall be classified as overtime and paid at the rate of double (2) time. The regular starting time of 8:00 a.m. (and resulting quitting time of 4:30 p.m.) may be moved forward to 6:00 a.m. or delayed one (1) hour to 9:00 a.m. The Employer has the option of working either five (5) eight-hour days or four (4) ten-hour days to constitute a normal forty (40) hour work week. When a four (4) ten-hour day work week is in effect, the standard work day shall be consecutive ten (10) hour periods between the hours of 6:30 a.m. and 6:30 p.m. Forty (40) hours per week shall constitute a week's work Monday through Thursday, inclusive. In the event the job is down for any reason beyond the Employer's control, then Friday and/or Saturday may, at the option of the Employer, be worked as a make-up day; straight time not to exceed ten (10) hours per day or forty (40) hours per week. Starting time will be designated by the employer. When the five (5) day eight (8) hour work week is in effect, forty (40) hours per week shall constitute a week's work, Monday through Friday, inclusive. In the event the job is down for any reason beyond the Employer's control, then Saturday may, at the option of the Employer, be worked as a make-up day; straight time not to exceed eight (8) hours per day or forty (40) hours per week. Make-up days shall not be utilized for days lost due to holidays.

**NO. 122:** Means forty (40) hours between Monday and Friday shall constitute the normal work week. Work shall be scheduled between the hours of 6:00 a.m. and 6:30 p.m., with one-half hour for lunch. Work in excess of eight (8) hours per day and forty (40) hours per week, and on Saturdays, shall be paid at the rate of one and one-half times the normal rate. Due to inclement weather during the week, Saturday shall be a voluntary make up day.

**NO. 124:** Means eight (8) hours shall constitute a day's work on all classes of work between the hours of 6:00 a.m. and 5:30 p.m., Monday through Friday. The pay for time worked during these hours shall be at the regular wage rate. The regular workweek shall be Monday through Friday. Employment from 4:30 p.m. to 12:00 midnight, Monday through Friday, shall be paid for at one and one-half (1½) times the regular hourly rate. From 12:00 midnight until 8:00 a.m. on any day shall be paid for at twice the regular hourly rate. All time worked on Sundays and the recognized holidays shall be paid at the rate of double (2) time. It is understood that forty (40) hours shall constitute a regular workweek, (5-8's) Sunday Midnight through Friday Midnight, understanding anything over eight (8) hours is one and one-half (1½) times the hourly wage rate.

**BOONE COUNTY  
HOLIDAY SCHEDULE – BUILDING CONSTRUCTION**

**NO. 3:** All work done on New Year's Day, Memorial Day, Independence Day, Labor Day, Veteran's Day (November 11), Thanksgiving Day, and Christmas Day shall be compensated at the double (2) time rate of pay. When any of these holidays fall on a Sunday, the following Monday shall be observed. No work shall be performed on the days set forth except in cases of emergencies to protect life or property.

**NO. 4:** All work done on New Year's Day, Memorial Day, Independence Day, Labor Day, Thanksgiving and Christmas Day shall be paid at the double time rate of pay. If any of the above holidays fall on Sunday, Monday will be observed as the recognized holiday. If any of the above holidays fall on Saturday, Friday will be observed as the recognized holiday.

**NO. 5:** All work that shall be done on New Year's Day, Memorial Day, Fourth of July, Labor Day, Veteran's Day, Thanksgiving Day, and Christmas Day shall be paid at the double (2) time rate of pay.

**NO. 7:** The following days are assigned days and are recognized as holidays: New Year's Day, Memorial Day, Independence Day, Labor Day, Veteran's Day, Thanksgiving Day, and Christmas Day. If a holiday falls on a Sunday, it shall be observed on the following Monday. If a holiday falls on a Saturday, it shall be observed on the preceding Friday. No work shall be performed on Labor Day except in case of jeopardy to work under construction. This is applied to protect Labor Day. When a holiday falls during the normal workweek, Monday through Friday, it shall be counted as eight (8) hours toward the forty (40) hour week. However, no reimbursement for these eight (8) hours is to be paid to the workman unless worked. If workman are required to work the above enumerated holidays or days observed as such, or on Sunday, they shall receive double (2) the regular rate of pay for such work.

**NO. 8:** All work performed on New Year's Day, Memorial Day, Independence Day, Labor Day, Veteran's Day, Thanksgiving Day, and Christmas Day, or the days observed in lieu of these holidays, shall be paid at the double time rate of pay.

**NO. 15:** All work accomplished on the recognized holidays of New Year's Day, Decoration Day (Memorial Day), Independence Day (Fourth of July), Labor Day, Veteran's Day, Thanksgiving Day and Christmas Day, or days observed as these named holidays, shall be compensated for at double (2) the regular hourly rate of wages plus fringe benefits. If a holiday falls on Saturday, it shall be observed on the preceding Friday. If a holiday falls on a Sunday, it shall be observed on the following Monday. No work shall be performed on Labor Day, Christmas Day, Decoration Day or Independence Day except to preserve life or property.

**NO. 19:** All work done on New Year's Day, Memorial Day, July 4th, Labor Day, Thanksgiving Day, and Christmas Day shall be paid at the double time rate of pay. The employee may take off Friday following Thanksgiving Day. However, the employee shall notify his or her Foreman, General Foreman or Superintendent on the Wednesday preceding Thanksgiving Day. When one of the above holidays falls on Sunday, the following Monday shall be considered a holiday and all work performed on either day shall be at the double (2) time rate. When one of the holidays falls on Saturday, the preceding Friday shall be considered a holiday and all work performed on either day shall be at the double (2) time rate.

**NO. 23:** All work done on New Year's Day, Memorial Day, Independence Day, Labor Day, Veteran's Day, Thanksgiving Day, Christmas Day and Sundays shall be recognized holidays and shall be paid at the double time rate of pay. When a holiday falls on Sunday, the following Monday shall be considered a holiday.

**NO. 44:** All work done on New Year's Day, Memorial Day, Independence Day, Veteran's Day, Thanksgiving Day, and Christmas Day shall be paid at the double time rate of pay. If a holiday falls on a Sunday, it shall be observed on the Monday following. If a holiday falls on a Saturday, it shall be observed on the preceding Friday. No work shall be performed on these days except in emergency to protect life or property. All work performed on these holidays shall be compensated at double the regular hourly rate for the work performed. Overtime shall be computed at half-hour intervals.

**NO. 45:** All work performed on New Year's Day, Memorial Day, Fourth of July, Veteran's Day, Thanksgiving Day, Labor Day, Christmas Day, or days celebrated as such, shall be paid at the double time rate of pay. When a National holiday falls on Sunday, Monday shall be observed as the holiday. When a National holiday falls on Saturday, the preceding Friday will be observed as the holiday.

**BOONE COUNTY  
HOLIDAY SCHEDULE – BUILDING CONSTRUCTION**

**NO. 54:** All work performed on New Year's Day, Memorial Day, Independence Day, Labor Day, Veteran's Day, Thanksgiving Day, the Friday after Thanksgiving Day, and Christmas Day shall be paid at the double (2) time rate of pay. When a holiday falls on Saturday, it shall be observed on Friday. When a holiday falls on Sunday, it shall be observed on Monday.

**NO. 55:** The following days are recognized as holidays: New Year's Day, Memorial Day, Independence Day, Labor Day, Thanksgiving Day and Christmas Day. If a holiday falls on a Sunday, it shall be observed on the following Monday. No work shall be performed on Labor Day except in case of jeopardy to work under construction. This rule is applied to protect Labor Day. When a holiday falls during the normal work week, Monday through Friday, it shall be counted as eight (8) hours toward the forty (40) hour week; however, no reimbursement for this eight (8) hours is to be paid the workmen unless worked. An Employer working a four (4) day, ten (10) hour schedule may use Friday as a make up day when an observed holiday occurs during the work week. Employees have the option to work that make up day. If workmen are required to work the above enumerated holidays, or days observed as such, they shall receive double (2) the regular rate of pay for such work.

**NO. 60:** All work performed on New Year's Day, Armistice Day (Veteran's Day), Decoration Day (Memorial Day), Independence Day (Fourth of July), Thanksgiving Day and Christmas Day shall be paid at the double time rate of pay. No work shall be performed on Labor Day except when triple (3) time is paid. When a holiday falls on Saturday, Friday will be observed as the holiday. When a holiday falls on Sunday, the following Monday shall be observed as the holiday.

**NO. 66:** All work performed on Sundays and the following recognized holidays, or the days observed as such, of New Year's Day, Decoration Day, Fourth of July, Labor Day, Veteran's Day, Thanksgiving Day and Christmas Day, shall be paid at double (2) the hourly rate plus an amount equal to the hourly Total Indicated Fringe Benefits. Whenever any such holidays fall on a Sunday, the following Monday shall be observed as a holiday.

**NO. 69:** All work performed on New Year's Day, Memorial Day, July Fourth, Labor Day, Veteran's Day, Thanksgiving Day or Christmas Day shall be compensated at double (2) their straight-time hourly rate of pay. Friday after Thanksgiving and the day before Christmas are also holidays, however, if the employer chooses to work the normal work hours on these days, the employee will be paid at straight-time rate of pay. If a holiday falls on a Saturday, the holiday will be observed on Saturday; if a holiday falls on a Sunday, the holiday will be observed on the following Monday.

**NO. 74:** All work performed on New Year's Day, Memorial Day, Fourth of July, Labor Day, Veteran's Day, Thanksgiving Day and Christmas Day, shall be paid at double (2) time of the hourly rate of pay. In the event one of the above holiday's falls on Saturday, the holiday shall be celebrated on Saturday. If the holiday falls on Sunday, the holiday will be celebrated on Monday.

**NO. 76:** Work performed on Holidays shall be paid at the rate of two times the normal rate. Holidays are: New Years Day, Memorial Day, Independence Day, Labor Day, Thanksgiving Day, Day after Thanksgiving, Christmas Day. If a holiday falls on a Sunday, it shall be celebrated on the following Monday, if it falls on Saturday, it shall be celebrated on the preceding Friday.

OCCUPATIONAL TITLE	* Date of Increase	Basic Hourly Rates	Over-Time Schedule	Holiday Schedule	Total Fringe Benefits
Carpenter	7/12	\$29.52	7	16	\$13.50
Millwright	7/12	\$29.52	7	16	\$13.50
Pile Driver	7/12	\$29.52	7	16	\$13.50
Electrician (Outside-Line Construction\Lineman)		\$36.36	9	12	\$5.00 + 42.5%
Lineman Operator		\$31.39	9	12	\$5.00 + 42.5%
Lineman - Tree Trimmer		\$22.68	32	31	\$5.00 + 23%
Groundman		\$24.27	9	12	\$5.00 + 42.5%
Groundman - Tree Trimmer		\$16.72	32	31	\$5.00 + 23%
Operating Engineer					
Group I	8/12	\$25.24	21	5	\$22.50
Group II	8/12	\$24.89	21	5	\$22.50
Group III	8/12	\$24.69	21	5	\$22.50
Group IV	8/12	\$21.04	21	5	\$22.50
Oiler-Driver	8/12	\$21.04	21	5	\$22.50
Laborer					
General Laborer	7/12	\$25.81	2	4	\$11.52
Skilled Laborer	7/12	\$26.41	2	4	\$11.52
Truck Driver-Teamster					
Group I		\$26.57	22	19	\$9.85
Group II		\$26.73	22	19	\$9.85
Group III		\$26.72	22	19	\$9.85
Group IV		\$26.84	22	19	\$9.85
Traffic Control Service Driver		\$26.415	28	27	\$9.045

Use Heavy Construction Rates on Highway and Heavy construction in accordance with the classifications of construction work established in 8 CSR 30-3.040(3).

Use Building Construction Rates on Building construction in accordance with the classifications of construction work established in 8 CSR 30-3.040(2).

If a worker is performing work on a heavy construction project within an occupational title that is not listed on the Heavy Construction Rate Sheet, use the rate for that occupational title as shown on the Building Construction Rate sheet.

For additional information regarding the application of the Lineman Tree Trimmer and the Groundman Tree Trimmer subcategories of the occupational title of Electrician (Outside-Line Construction\Lineman), see the Labor and Industrial Relations Commission Order of June 21, 2012, in the Matter of Objection Nos. 122-237.

**REPLACEMENT PAGE  
BOONE COUNTY  
OVERTIME SCHEDULE – HEAVY CONSTRUCTION**

**FED:** Minimum requirement per Fair Labor Standards Act means time and one-half (1 ½) shall be paid for all work in excess of forty (40) hours per work week.

**NO. 2:** Means a regular workweek shall be forty (40) hours and will start on Monday and end on Friday. The Employer shall have the option of working five 8-hour days or four 10-hour days Monday through Friday. If an Employer elects to work five 8-hour days during any workweek, hours worked more than eight (8) per day or 40 per week shall be paid at time and one-half the hourly rate Monday through Friday. If an Employer elects to work four 10-hour days in a week, work performed more than ten (10) hours per day or 40 hours per week shall be paid at time and one-half the hourly rate Monday through Friday. When working a five 8-hour day schedule and an Employer is prevented from working forty (40) hours Monday through Friday, or any part thereof, by reason of inclement weather, Saturday or any part thereof may be worked as a make-up day at the straight time rate. If an Employer is working a four 10-hour day schedule and loses a day due to inclement weather, he may work 10 hours Friday at straight time. All hours worked over the 40 hours Monday through Friday will be paid at 1 ½ overtime rate. A workday shift is to begin at the option of the Employer, between 6:00 a.m. and not later than 9:00 a.m. However, the project starting time may be advanced or delayed if required. If workmen are required to work the enumerated holidays or days observed as such or Sundays, they shall receive double (2) the regular rate of pay for such work. Overtime shall be computed at one-half (1/2) hour intervals. Shift: The Contractor may elect to work one, two or three shifts on any work. When operating on more than one shift, the shifts shall be known as the day shift, swing shift, and graveyard shift as such terms are recognized in the industry. When two shifts are worked on any operation, the shifts will consist of eight (8) or ten (10) hours exclusive of lunchtime. When three shifts are worked the first day or day shift will consist of eight (8) hours exclusive of lunchtime. The second or swing shift shall consist of seven and one-half (7 1/2) hours work for eight hours pay, exclusive of lunchtime, and the third or the graveyard shift shall consist of seven (7) hours work for eight (8) hours pay, exclusive of the lunchtime. All time in excess of normal shifts shall be considered overtime. Multiple shift (the two or three shift) operation will not be construed on the entire project if at any time it is deemed advisable and necessary for the Employer to multiple shift a specific operation. However, no shift shall be started between midnight and six a.m. except the graveyard shift on a three-shift operation, or except in an unusual or emergency situation. If an Employer starts a shift between midnight and 6 a.m. except the graveyard shift on a three-shift operation, he shall reimburse all employees for the entire shift at the double time rate. Completion of the second shift on a two-shift operation or completion of the graveyard shift on a three-shift operation that carries over into Saturday morning, shall be at the straight time rate. Overtime shall be computed at ½ hour intervals.

**NO. 7:** Means the regular work week shall start on Monday and end on Friday, except where the Employer elects to work Monday through Thursday, ten (10) hours per day. All work over ten (10) hours in a day or forty (40) hours in a week shall be at the overtime rate of one and one-half (1½) times the regular hourly rate. The regular work day shall be either eight (8) or ten (10) hours. If a job can't work forty (40) hours Monday through Friday because of inclement weather or other conditions beyond the control of the Employer, Friday or Saturday may be worked as a make-up day at straight time (if working 4-10's). Saturday may be worked as a make-up day at straight time (if working 5-8's). Make-up days shall not be utilized for days lost due to holidays. A workday is to begin at the option of the Employer but not later than 11:00 a.m. except when inclement weather, requirements of the owner or other conditions beyond the reasonable control of the Employer prevent work. Except as worked as a make-up day, time on Saturday shall be worked at one and one-half (1½) times the regular rate. Work performed on Sunday shall be paid at two (2) times the regular rate. Work performed on recognized holidays or days observed as such, shall also be paid at the double (2) time rate of pay.

**NO. 9:** Eight (8) hours shall constitute a work day between the hours of 7:00 a.m. and 4:30 p.m. Forty (40) hours within five (5) days, Monday through Friday inclusive, shall constitute the work week. Work performed in the 9th and 10th hour, Monday through Friday, shall be paid at time and one-half (1½) the regular straight time rate of pay. Contractor has the option to pay two (2) hours per day at the time and one-half (1½) the regular straight time rate of pay between the hours of 6:00 a.m. and 5:30 p.m., Monday through Friday. Work performed in the first eight (8) hours on Saturday shall be paid at the rate of one and eight tenths (1.8) the regular straight time rate. Work performed outside these hours and on Sundays and recognized legal holidays, or days celebrated as such, shall be paid for at the rate of double (2) time.

**REPLACEMENT PAGE  
BOONE COUNTY  
OVERTIME SCHEDULE – HEAVY CONSTRUCTION**

**NO. 21:** All work performed on New Year's Day, Memorial Day, Fourth of July, Labor Day, Thanksgiving Day, and Christmas Day shall be paid for at double (2) the straight-time rate of pay. Any of the above listed holidays falling on Sunday, shall be observed on the following Monday and paid for at double (2) the straight-time rate of pay. Any of the above listed holidays falling on Saturday shall be observed on the previous Friday, and paid for at double (2) the straight-time rate of pay. If any of the above listed holidays fall on Friday, Saturday, Sunday, or Monday, creating a three-day weekend, then the entire three (3) days (either Friday, Saturday, and Sunday – if the holiday falls on Friday or Saturday; or Saturday, Sunday, and Monday – if the holiday falls on Sunday or Monday) shall be paid for at double (2) the straight-time rate of pay.

**NO. 22:** Means a regular work week of forty (40) hours will start on Monday and end on Friday. The regular work day shall be either eight (8) or ten (10) hours. If a crew is prevented from working forty (40) hours Monday through Friday, or any part thereof by reason of inclement weather, Saturday or any part thereof may be worked as a make-up day at the straight time rate. Employees who are part of a regular crew on a make-up day, notwithstanding the fact that they may not have been employed the entire week, shall work Saturday at the straight time rate. A workday is to begin between 6:00 a.m. and 9:00 a.m. However, the project starting time may be advanced or delayed if mutually agreed to by the interested parties. For all time worked on recognized holidays, or days observed as such, double (2) time shall be paid.

**NO. 26:** Means a regular work week of forty (40) hours will start on Monday and end on Friday. The regular work day shall be either eight (8) or ten (10) hours. If a crew is prevented from working forty (40) hours Monday through Friday, or any part thereof by reason of inclement weather, Saturday or any part thereof may be worked as a make-up day at the straight time rate. Employees who are part of a regular crew on a make-up day, notwithstanding the fact that they may not have been employed the entire week, shall work Saturday at the straight time rate. A workday is to begin between 6:00 a.m. and 9:00 a.m. However, the project starting time may be advanced or delayed if mutually agreed to by the interest parties. For all time worked on recognized holidays, or days observed as such, double (2) time shall be paid.

**NO. 28:** Means a regular work week of forty (40) hours will start on Monday and end on Friday. The regular work day shall be either eight (8) or ten (10) hours. If a crew is prevented from working forty (40) hours Monday through Friday, or any part thereof by reason of inclement weather, Saturday or any part thereof may be worked as a make-up day at the straight time rate. Employees who are part of a regular crew on a make-up day, notwithstanding the fact that they may not have been employed the entire week, shall work Saturday at the straight time rate. A workday is to begin between 6:00 a.m. and 9:00 a.m. However, the project starting time may be advanced or delayed if mutually agreed to by the interest parties. For all time worked on recognized holidays, or days observed as such, double (2) time shall be paid.

**NO. 32:** Means the overtime rate shall be time and one-half the regular rate for work over forty (40) hours per week. Sundays and Holidays shall be paid at double the straight time rate.



**REPLACEMENT PAGE  
BOONE COUNTY  
HOLIDAY SCHEDULE – HEAVY CONSTRUCTION**

**NO. 4:** All work performed on New Year's Day, Memorial Day, Independence Day, Labor Day, Thanksgiving Day, Christmas Day, or observed as such, shall be paid at the double time rate of pay. When a Holiday falls on a Sunday, Monday shall be observed. No work shall be performed on Labor Day, except in case of jeopardy to life or property. This is applied to protect Labor Day.

**NO. 5:** The following days are recognized as holidays: New Year's Day, Memorial Day, Fourth of July, Labor Day, Thanksgiving Day and Christmas Day. If a holiday falls on a Sunday, it shall be observed on the following Monday. If a holiday falls on a Saturday, it shall be observed on the preceding Friday. No work shall be performed on Labor Day except in case of jeopardy to work under construction. This rule is applied to protect Labor Day. When a holiday falls during the normal work week, Monday through Friday, it shall be counted as eight (8) hours toward a forty (40) hour week; however, no reimbursement for this eight (8) hours is to be paid the workman unless worked. If workmen are required to work the above recognized holidays or days observed as such, or Sundays, they shall receive double (2) the regular rate of pay for such work. The above shall apply to the four 10's Monday through Friday work week. The ten (10) hours shall be applied to the forty (40) hour work week.

**NO. 12:** All work performed on New Year's Day, Memorial Day, Fourth of July, Labor Day, Veteran's Day, Thanksgiving Day, Christmas Day, or days celebrated as such, shall be paid at the double time rate of pay. When one of the foregoing holidays falls on Sunday, it shall be celebrated on the following Monday. When one of the foregoing holidays falls on Saturday, it shall be celebrated on the Friday before the holiday.

**NO. 16:** The following days are recognized as holidays: New Year's Day, Memorial Day, Fourth of July, Labor Day, Thanksgiving Day and Christmas Day. If a holiday falls on Sunday, it shall be observed on the following Monday. If a holiday falls on Saturday, it shall be observed on the preceding Friday. No work shall be performed on Labor Day except in case of jeopardy to work under construction. This rule is applied to protect Labor Day. When a holiday falls during the normal work week, Monday through Friday, it shall be counted as eight (8) hours toward the forty (40) hour week; however, no reimbursement for this eight (8) hours is to be paid to the worker unless worked. If workers are required to work the above recognized holidays or days observed as such, they shall receive double (2) the regular rate of pay for such work.

**NO. 19:** The following days are recognized as holidays: New Year's Day, Memorial Day, Independence Day, Labor Day, Thanksgiving Day and Christmas Day. If a holiday falls on a Sunday, it shall be observed on the following Monday. No work shall be performed on Labor Day except in case of jeopardy to work under construction. This rule is applied to protect Labor Day. When a holiday falls during the normal work week, Monday through Friday, it shall be counted as eight (8) hours toward the forty (40) hour week; however, no reimbursement for this eight (8) hours is to be paid the workmen unless worked. An Employer working a four (4) day, ten (10) hour schedule may use Friday as a make up day when an observed holiday occurs during the work week. Employees have the option to work that make up day. If workmen are required to work the above enumerated holidays, or days observed as such, they shall receive double (2) the regular rate of pay for such work.

**NO. 27:** The following days are recognized as holidays: New Year's Day, Memorial Day, Independence Day, Labor Day, Thanksgiving Day and Christmas Day. If a holiday falls on a Sunday, it shall be observed on the following Monday. No work shall be performed on Labor Day except in case of jeopardy to work under construction. This rule is applied to protect Labor Day. When a holiday falls during the normal work week, Monday through Friday, it shall be counted as eight (8) hours toward the forty (40) hour week; however, no reimbursement for this eight (8) hours is to be paid the workmen unless worked. An Employer working a four (4) day, ten (10) hour schedule may use Friday as a make up day when an observed holiday occurs during the work week. Employees have the option to work that make up day. If workmen are required to work the above enumerated holidays, or days observed as such, they shall receive double (2) the regular rate of pay for such work.

**NO. 31:** All work performed on New Year's Day, Presidents' Day, Veterans' Day, Good Friday, Decoration Day, Fourth of July, Labor Day, Christmas Eve Day, Christmas Day, Thanksgiving Day and Day after Thanksgiving or days celebrated for the same.



**AFFIDAVIT OF COMPLIANCE WITH THE PREVAILING WAGE LAW**

Before me, the undersigned Notary Public, in and for the County of \_\_\_\_\_

State of \_\_\_\_\_, personally came and appeared (name and title)

\_\_\_\_\_ of the (name of company)

\_\_\_\_\_ (a corporation) (a partnership) (a proprietorship)

and after being duly sworn did depose and say that all provisions and requirements set out in Chapter 290 Sections 290.210 through and including 290.340, Missouri Revised Statutes, pertaining to the payment of wages to workmen employed on public works projects have been fully satisfied and there has been no exception to the full and complete compliance with said provisions and requirements and with Wage Determination NO. \_\_\_\_\_ issued by the Division of Labor Standards on the \_\_\_\_\_ day of \_\_\_\_\_ 20\_\_\_\_, in carrying out the Contract and work in connection with

(name of project) \_\_\_\_\_ located at

(name of institution) \_\_\_\_\_ in \_\_\_\_\_ County,

Missouri and completed on the \_\_\_\_\_ day of \_\_\_\_\_, 20\_\_\_\_\_.

\_\_\_\_\_  
Signature

Subscribed and sworn to me this \_\_\_\_\_ day of \_\_\_\_\_, 20\_\_\_\_\_.

My commission expires \_\_\_\_\_, 20\_\_\_\_\_.

\_\_\_\_\_  
Notary Public

# Boone County Purchasing

Melinda Bobbitt, CPPB  
Director



613 E. Ash Street, Room 110  
Columbia, MO 65201  
Phone: (573) 886-4391  
Fax: (573) 886-4390

## INSTRUCTIONS FOR COMPLIANCE WITH HOUSE BILL 1549

House Bill 1549 addresses the Department of Homeland Security's and the Social Security Administration's E-Verify Program (Employment Eligibility Verification Program) that requires the County to verify "lawful presence" of individuals when we contract for work/service; verify that contractor has programs to verify lawful presence of their employees when contracts exceed \$5,000; and a requirement for OSHA safety training for public works projects.

The County is required to obtain certification that the bidder awarded the attached contract participates in a federal work authorization program. To obtain additional information on the Department of Homeland Security's E-Verify program, go to:

<http://www.uscis.gov/portal/site/uscis/menuitem.eb1d4c2a3e5b9ac89243c6a7543f6d1a/?vgnnexto id=75bce2e261405110VgnVCM1000004718190aRCRD&vgnnextchannel=75bce2e261405110VgnVCM1000004718190aRCRD>

Please complete and return form *Work Authorization Certification Pursuant to 285.530 RSMo* if your contract amount is in excess of \$5,000. **Attach to this form the E-Verify Memorandum of Understanding that you completed when enrolling or the last page of that Memorandum that includes your firm's name with confirmation of enrollment.**

If you are an Individual/Proprietorship, then you must return the attached *Certification of Individual Bidder*. On that form, you may do one of the three options listed. Be sure to attach any required information for those options as detailed on the *Certification of Individual Bidder*. If you choose option number two, then you will also need to complete and return the attached form *Affidavit*.



## CERTIFICATION OF INDIVIDUAL BIDDER

Pursuant to Section 208.009 RSMo, any person applying for or receiving any grant, contract, loan, retirement, welfare, health benefit, post secondary education, scholarship, disability benefit, housing benefit or food assistance who is over 18 must verify their lawful presence in the United States. Please indicate compliance below. Note: A parent or guardian applying for a public benefit on behalf of a child who is citizen or permanent resident need not comply.

- \_\_\_\_\_ 1. I have provided a copy of documents showing citizenship or lawful presence in the United States. (Such proof may be a Missouri driver's license, U.S. passport, birth certificate, or immigration documents). Note: If the applicant is an alien, verification of lawful presence must occur prior to receiving a public benefit.
  
- \_\_\_\_\_ 2. I do not have the above documents, but provide an affidavit (copy attached) which may allow for temporary 90 day qualification.
  
- \_\_\_\_\_ 3. I have provided a completed application for a birth certificate pending in the State of \_\_\_\_\_. Qualification shall terminate upon receipt of the birth certificate or determination that a birth certificate does not exist because I am not a United States citizen.

---

Applicant	Date	Printed Name
-----------	------	--------------

**AFFIDAVIT**  
**(Only Required for Certification of Individual Bidder (Option #2))**

State of Missouri                    )  
  )SS.  
County of \_\_\_\_\_            )

I, the undersigned, being at least eighteen years of age, swear upon my oath that I am either a United States citizen or am classified by the United States government as being lawfully admitted for permanent residence.

\_\_\_\_\_  
Date

\_\_\_\_\_  
Signature

\_\_\_\_\_  
Social Security Number  
or Other Federal I.D. Number

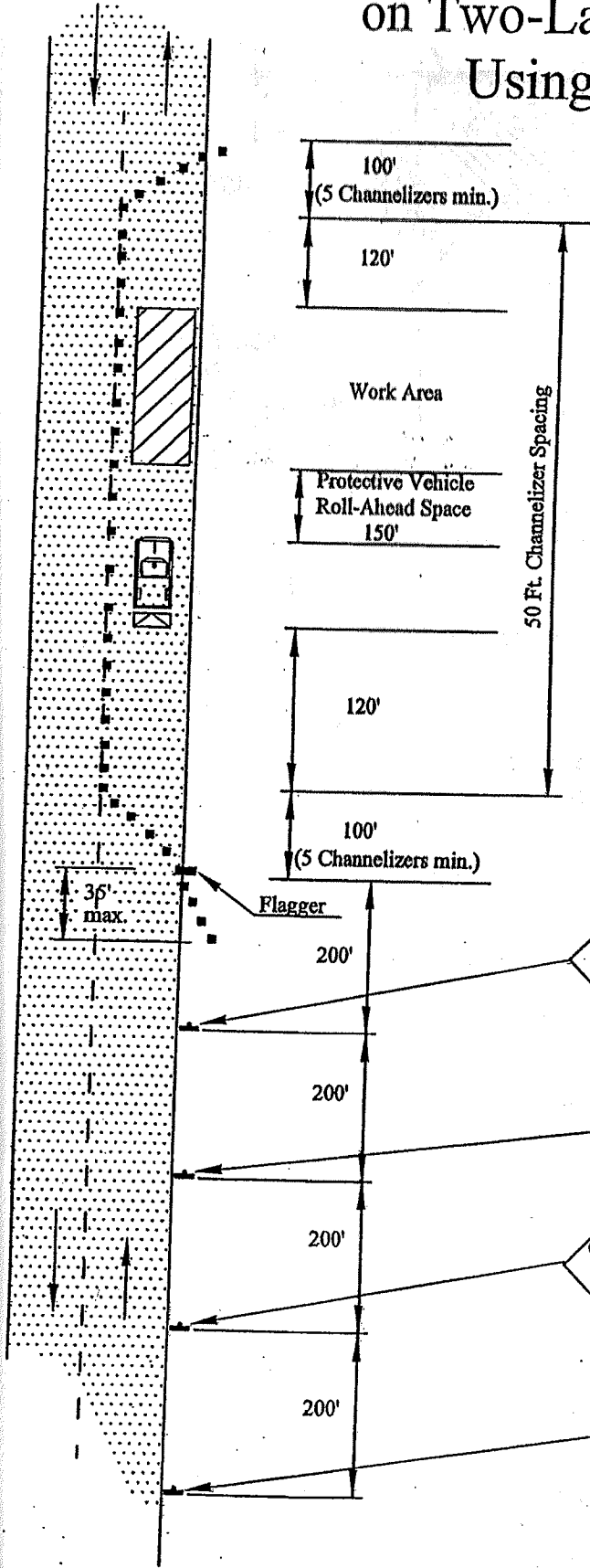
\_\_\_\_\_  
Printed Name

On the date above written \_\_\_\_\_ appeared before me and swore that the facts contained in the foregoing affidavit are true according to his/her best knowledge, information and belief.

\_\_\_\_\_  
Notary Public

My Commission Expires:

# Low Volume Lane Closure on Two-Lane Highway Using Flaggers



### Notes:

When a temporary road closure is needed, both directions may be stopped at the same time up to a maximum of 20 minutes.

The protective vehicle may be eliminated if adequate sight distance exists and the work vehicle uses activated rotating lights.

For mobile operations where workers are on foot and move with the operation, channelizers may be reduced or eliminated.

Additional warning signs shall be erected at each intersection with another roadway within the work zone. Upon the discretion of the supervisor, additional warning signs may be erected at other intersections within the work zone.

For mobile operations, spacing between flagger and FLAGGER AHEAD sign shall not exceed one mile.

See MUTCD and MODoT Regulations for additional applicable details, notes, and definitions.

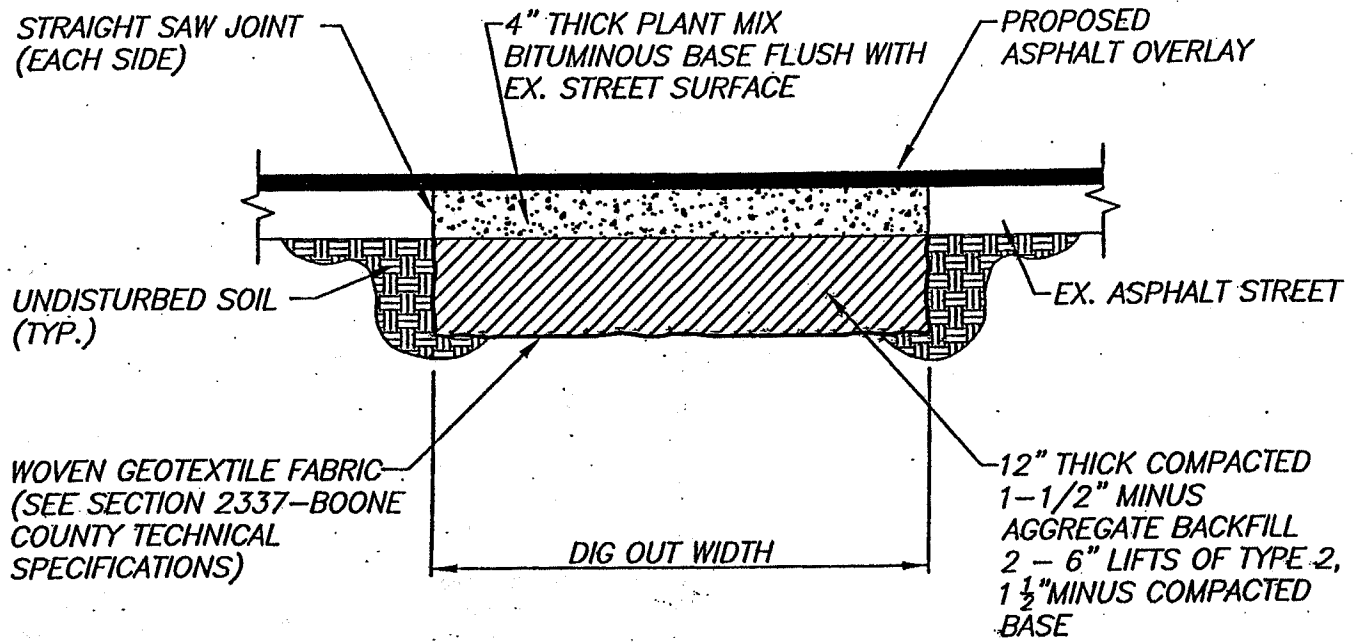
## Paving Improvements Traffic Control Detail Sheet



DESIGN AND CONSTRUCTION DEPT.  
5551 HIGHWAY 63 SOUTH  
COLUMBIA, MISSOURI 65201-9711  
PHONE (573) 449-8515  
FAX (573) 875-1602

PROJECT No:
DATE: 3/22/10
SCALE: Not to Scale
DESIGN BY: A D
DRAWN BY: TC
CHECKED BY:
SHEET 1 OF 1





Notes:

1. Sawcut area designated by Boone County Public Works.
2. Excavate to a Minimum of 16" Depth\*\*
3. Compact Bottom and Place Woven Fabric.  
(Mirafi 600X or Approved Equal.)
4. Place Two (2) 6" Lifts of Type 2 , 1 1/2" Minus Compacted Base.
5. Place 4" Lift of Compacted Bituminous Base on Primed Base Rock. Finish shall be flush with road surface and have a smooth ride.
6. Additional Depth shall be backfilled with Type 2 , 1 1/2" Minus Compacted Base. 6" Maximum per Lift.
7. Base **MUST** be approved by Inspector **BEFORE** placement of Fabric and Rock.
8. Contractor shall remove and dispose of all materials excavated from the repair area.

\*\* Additional Depth shall be paid by the Cubic Yard as per the Bid Form.

# Dig Out and Repair Detail

Not To Scale

Revised: 8-16-10



***“No Bid” Response Form***

**Boone County Purchasing**  
601 E. Walnut, Room 209  
Columbia, MO 65201

Amy Robbins, Buyer  
(573) 886-4392 – Fax: (573) 886-4390

**“NO BID RESPONSE FORM”**

**NOTE: COMPLETE AND RETURN THIS FORM ONLY IF YOU DO NOT WANT TO  
SUBMIT A BID**

If you do not wish to respond to this bid request, but would like to remain on the Boone County vendor list **for this service/commodity**, please remove form and return to the Purchasing Department by mail or fax.

If you would like to FAX this “No Bid” Response Form to our office, the FAX number is (573) 886-4390.

**Bid: 06-25JAN13 – 2013 Mill & Overlay Term & Supply**

Business Name: \_\_\_\_\_

Address: \_\_\_\_\_

\_\_\_\_\_

\_\_\_\_\_

Telephone: \_\_\_\_\_

Contact: \_\_\_\_\_

Date: \_\_\_\_\_

Reason(s) for not bidding:

\_\_\_\_\_  
\_\_\_\_\_  
\_\_\_\_\_