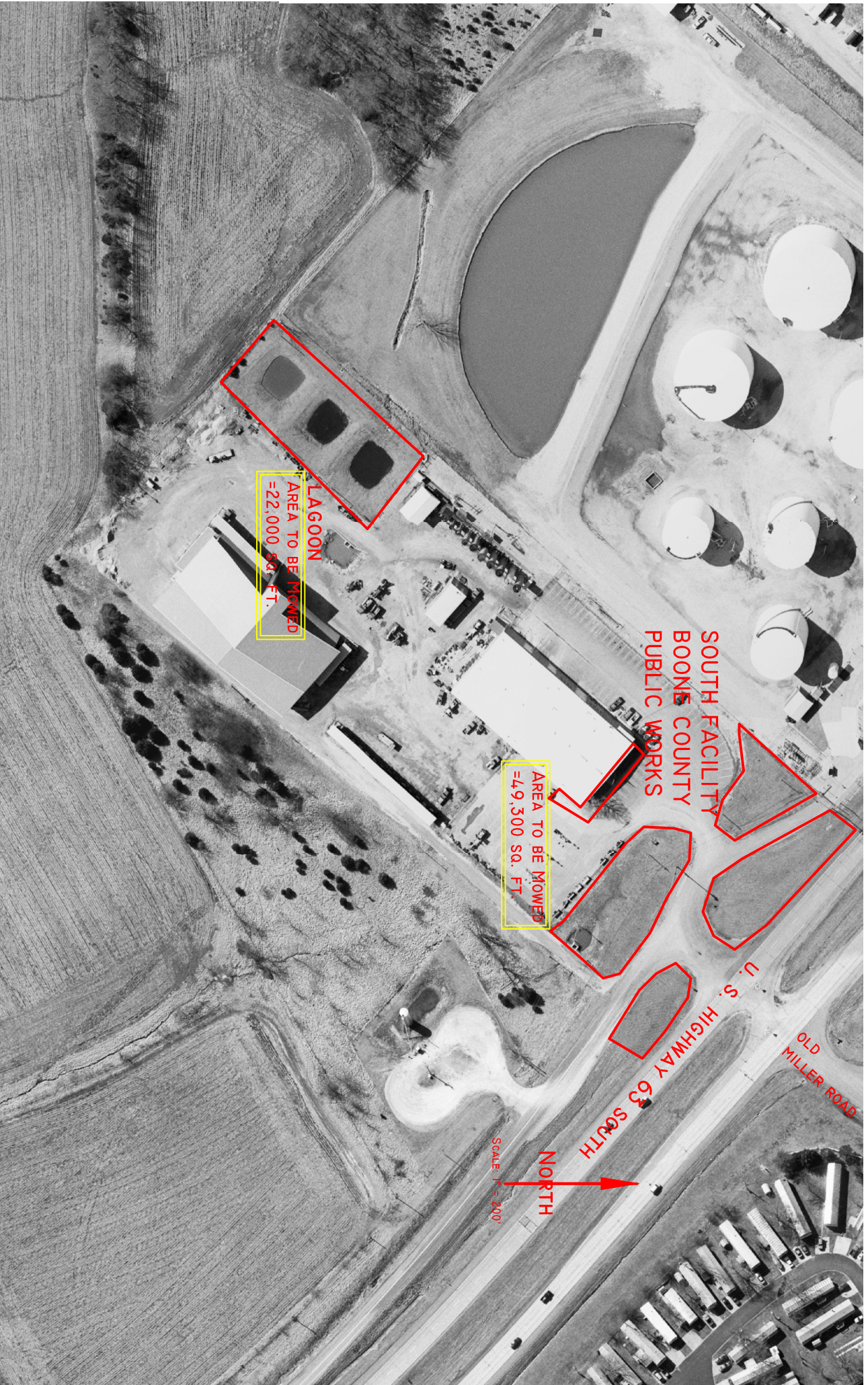


ATTACHMENT 'G'



LAGOON  
AREA TO BE MOWED  
=22,000 SQ. FT.

AREA TO BE MOWED  
=49,500 SQ. FT.

SOUTH FACILITY  
BOONE COUNTY  
PUBLIC WORKS

U.S. HIGHWAY 63 SOUTH  
OLD MILLER ROAD

NORTH  
SCALE 1"=200'